

1
2
3
4
5
6
7
8
9
10
11
12
13
14
15
16
17
18
19
20
21
22



Standardized Product Definition and Product Testing Guidelines for Biochar That Is Used in Soil

Type of Document:	Product Definition and Specification Standards
Status of Document:	Final
Version Number:	2.1
Version Date:	23 November 2015
Document Reference Code:	IBI-STD-2.1

NOTE TO USERS:

The International Biochar Initiative may update this manual as necessary. Please make sure you are using the latest version available at <http://www.biochar-international.org/characterizationstandard>.

© International Biochar Initiative - November 2015

OWNERSHIP AND COPYRIGHT NOTICE



This work is licensed under the terms of the Creative Commons Attribution-Non Commercial-No Derivs 3.0 Unported License attached in Appendix 9. Under this license, you are free:

to **Share** — to copy, distribute and transmit the work

Under the following conditions:



Attribution — You must attribute the work to the International Biochar Initiative (IBI) (but not in any way that suggests that IBI endorses you or your use of the work).



Non-commercial — You may not use this work for commercial purposes.



No Derivative Works — You may not alter, transform, or build upon this work.

With the understanding that:

Waiver— Any of the above conditions can be waived if you get permission from the copyright holder.

Public Domain— Where the work or any of its elements is in the public domain under applicable law, that status is in no way affected by the license.

Other Rights— In no way are any of the following rights affected by the license:

- Your fair dealing or fair use rights, or other applicable copyright exceptions and limitations;
- The author's moral rights;
- Rights other persons may have either in the work itself or in how the work is used, such as publicity or privacy rights.

1 **DISCLAIMER**

2 The International Biochar Initiative (IBI) *Standardized Product Definition and Product*
3 *Testing Guidelines for Biochar That Is Used in Soil* (hereinafter referred to as the *IBI*
4 *Biochar Standards*) have been prepared with the intent of providing stakeholders and
5 commercial entities with standards to identify certain qualities and characteristics of
6 biochar materials according to relevant, reliable, and measurable characteristics.
7 Manufacturers who follow these *IBI Biochar Standards* do so voluntarily. In no way shall
8 the IBI or its associates be responsible for the use or misuse of information and
9 guidance provided in this document. Anyone making use of this document assumes all
10 liability arising from such use.

11 ***IBI does not make, and hereby specifically disclaims, any representation,***
12 ***warranty, claim, or guarantee regarding biochar tested and characterized***
13 ***according to this document, including but not limited to any representation,***
14 ***warranty, claim, or guarantee relating to the safety or fitness of such biochar***
15 ***for a particular purpose.*** Independent professional judgment must be exercised when
16 producing and using biochar and, IBI makes no representation or warranty as to the
17 safety or quality of biochar tested and characterized according to this document. This
18 document does not purport to address all of the safety concerns, if any, associated with
19 the use of this document or the use or production of biochar tested and characterized
20 according to this document. It is the responsibility of the user of this document, and the
21 manufacturers and users or consumers of biochar, to establish appropriate safety and
22 health practices and determine the applicability of any national, state or provincial, and
23 local regulatory limitations prior to use.

24 IBI does not make, and hereby specifically disclaims, any representation, warranty,
25 claim, or guarantee regarding biochar that has not been tested and characterized
26 according to this document, including but not limited to any representation, warranty,
27 claim, or guarantee relating to the safety or fitness of such biochar for a particular
28 purpose.

29 IBI is not a seller of biochar and does not make, and hereby specifically disclaims, any
30 and all representations, endorsements, guarantees, and warranties, express or implied,
31 regarding the use of this document or biochar tested and characterized according to this
32 document, including, without limitation, the implied warranties of merchantability and
33 fitness for a particular purpose, title and non-infringement of third-party rights. IBI
34 advises consumers of biochar that, from IBI's perspective, all biochar tested and
35 characterized according to this document is purchased as is and with all faults from the
36 biochar manufacturer.

37 IBI expressly disclaims any grant of apparent or actual authority from IBI to
38 manufacturers of biochar tested and characterized according to this document.

1 No portion of this document is intended for use as a sustainability or production process
2 guideline. Further documentation and guidance is necessary to identify appropriate
3 sustainability practices and/or safe and effective production processes.

4 The benefits of a given biochar material vary widely with the material and with crop,
5 soil, and climate factors. This document makes no representations, claims, guarantees,
6 or warranties regarding the potential benefits of any given biochar material in any
7 particular application.

8 The *IBI Biochar Standards* are intended to be revised and updated as the science and
9 body of knowledge surrounding biochar continues to evolve, and, if necessary, to
10 provide technical or other corrections or changes to the *IBI Biochar Standards* and/or
11 this document. Please ensure that you are using the most up-to-date version found on
12 the website of the International Biochar Initiative:
13 <http://www.biochar-international.org/characterizationstandard>.

14

15 **LIMITATION OF LIABILITY**

16 Under no circumstances will IBI be liable for any loss or damage caused by your reliance
17 on the information obtained from the *IBI Biochar Standards*. It is your responsibility to
18 evaluate the accuracy, completeness, and usefulness of this document. In no event shall
19 IBI be liable for any direct, indirect, punitive, incidental, special, or consequential
20 damages arising out of or relating to the *IBI Biochar Standards*, whether based on
21 warranty, contract, tort, strict liability, or any other legal theory. Because some
22 jurisdictions do not allow the exclusion or limitation of liability for negligence,
23 consequential, incidental, or other damages, in such jurisdictions IBI's liability is limited
24 to the greatest extent permitted by law. If you are dissatisfied with any portion of the
25 *IBI Biochar Standards*, your sole and exclusive remedy is to stop using the *IBI Biochar*
26 *Standards*.

27

28 **INDEMNITY**

29 By using the *IBI Biochar Standards*, you hereby agree to defend and hold IBI harmless
30 from and against any and all claims, actions, demands, liabilities, losses, settlements,
31 costs, and fees (including, without limitation, reasonable attorneys' fees and court
32 costs), arising from or allegedly arising from your use or misuse of this document.

33 **Foreword**

34 The *IBI Biochar Standards* provide a standardized definition of biochar and biochar
35 characteristics related to the use of biochar as a soil amendment. They have been developed by
36 the International Biochar Initiative (IBI) in collaboration with a wide variety of industry and

1 academic experts and through public input on an international level. The *IBI Biochar Standards*
2 were created to encourage further development of the biochar industry by providing
3 standardized information regarding the characterization of biochar materials to assist in
4 achieving more consistent levels of product quality. In addition to providing product definition
5 and qualitative specification standards, this document has been developed to assist biochar
6 manufacturers in providing consumers with consistent access to credible information regarding
7 qualitative and physicochemical properties of biochar.

8 The *IBI Biochar Standards* are designed to support the *IBI Biochar Certification Program*.
9 Separately, the *IBI Biochar Standards* are also intended for use by various national and regional
10 product standards bodies, and national and regional biochar groups for their own local
11 adaptation and use, and as a reference in regulatory situations, as may be appropriate.

12 The *IBI Biochar Standards* were developed as a means of providing information and market
13 certainty about the attributes of biochars for use in soil applications. Ultimately, the use and
14 promotion of these *IBI Biochar Standards* will build consumer and regulatory confidence about
15 biochar, through the provision of consistent and reliable information regarding biochar
16 properties. Biochar can be made from a variety of feedstocks, using a variety of different
17 production processes, and can possess many different attributes. The consistent reporting of
18 biochar properties will ensure that pertinent information about biochars for use in soil
19 applications is systematically communicated, regardless of feedstock type, production process,
20 or final properties.

21 IBI developed the *IBI Biochar Standards* in a transparent process open to public participation,
22 review, and input. Throughout the development process IBI relied upon the drafting, review,
23 and guidance of experts in the field, ensuring an efficient path from concept to final product,
24 and addressing the needs of a broad range of commercial biochar manufacturers and end
25 users. As the document was developed, public input from the larger international biochar
26 community was continuously sought to provide a wider perspective on the use and functionality
27 of this tool.

28 The design of the *IBI Biochar Standards* follows current best practices and available science. As
29 biochar science continues to improve, the *IBI Biochar Standards* will be updated in an iterative
30 process in order to remain current. Therefore these *IBI Biochar Standards* and this document
31 will be periodically revised through further consultation with the international biochar
32 community.

33 The *IBI Biochar Standards* document development process is based on the following guiding
34 principles:

- 35 • Maintain congruence with best practice guidance for standards development such as
36 International Standards Organization (ISO), ASTM International (ASTM), and Institute of
37 Electrical and Electronics Engineers (IEEE);
- 38 • Strictly adhere to process, ensuring efficient and effective collaboration;

- 1 • Engage the knowledgeable and diverse stakeholder groups active in the biochar
- 2 industry;
- 3 • Organize independent working groups with broad stakeholder representation, and,
- 4 • Rely on IBI infrastructure and capacity for leadership and administration of the initiative.

5 The complete record of process documentation, including the list of working group members,
6 can be found on the IBI website at:

7 <http://www.biochar-international.org/characterizationstandard>.

DRAFT

1	Table of Contents	
2	OWNERSHIP AND COPYRIGHT NOTICE.....	2
3	Foreword.....	4
4	1 Scope.....	9
5	2 Terms and Definitions	10
6	3 Biomass Feedstock Material and Biochar Production	10
7	3.1 General Feedstock Material Requirements	10
8	3.2 Best Management Practices for Biochar Production, Material Handling and Storage.....	10
9	4 Biochar Material Test Categories and Characteristics	11
10	4.1 Test Category A: Basic Utility Properties	12
11	4.2 Test Category B: Toxicant Assessment.....	14
12	4.3 Test Category C: Advanced Analysis and Soil Enhancement Properties.....	16
13	5 General Protocols and Restrictions	17
14	5.1 Biochar Sampling Procedures.....	17
15	5.2 Laboratory Standards.....	17
16	5.3 Timing and Frequency of Testing.....	17
17	5.4 Material Changes in Feedstock and Thermochemical Production Parameters	18
18	5.5 Category B Testing Frequency	18
19	5.6 Testing Requirements for Weathered Biochar.....	19
20	5.7 Timing of Testing for Post-Processed Biochar	20
21	5.8 Provisions for High Carbon Biomass Ash	21
22	5.9 Conformity and Record Keeping.....	22
23	6 Revisions to the <i>IBI Biochar Standards</i>.....	22
24	6.1 Policy revisions	23
25	6.2 Technical program revisions.....	23
26	7 References.....	23
27	Appendix 1 – Expanded Information on Test Methods for Category B Toxicants Assessment	27
28	Appendix 2 – PAH, PCDD/F and PCB Compounds to be Tested	29
29	Appendix 3 – Toxicant Assessment and Determination of Thresholds	31
30	Appendix 4 – Biochar Sampling Procedures	34
31	Appendix 5 – Recommended General Sample Analysis Procedures and Protocols for Specific	
32	Tests.....	38
33	Appendix 6 – Determining a “Material Change” in Feedstock.....	41

1 **Appendix 7 – The Use of H:C_{org} to Indicate C Stability** 44

2 **Appendix 8 – Glossary** 47

3 **Appendix 9 – Creative Commons License**..... 56

4

DRAFT

1 Scope

2 Issued by the International Biochar Initiative (IBI) and based on international consultation, this
3 *IBI Biochar Standards* document is intended to establish a common definition for biochar, and
4 standardized testing and measurement methods for selected physicochemical properties of
5 biochar materials.

6 Biochar is a solid material obtained from the thermochemical conversion of biomass in an
7 oxygen-limited environment. Biochar can be used as a product itself or as an ingredient within a
8 blended product, with a range of applications as an agent for soil improvement, improved
9 resource use efficiency, remediation and/or protection against particular environmental
10 pollution, and as an avenue for greenhouse gas (GHG) mitigation.

11 These *IBI Biochar Standards* provide a standardized definition of biochar and biochar
12 characteristics related to the use of biochar as a soil amendment. They serve as the basis for
13 the *IBI Biochar Certification Program*, and are intended for use and adaptation to local
14 conditions and regulations by any nation or region. These *IBI Biochar Standards* support not
15 only baseline safety considerations but also the evolving understanding of the positive functions
16 of biochar in soil. This document does not prescribe appropriate uses for biochar materials, nor
17 provide guidance on what biochar can or should be used for.

18 These *IBI Biochar Standards* relate to the physicochemical properties of biochar only, and do
19 not prescribe production methods or specific feedstocks, nor do they provide limits or terms for
20 defining the sustainability and/or GHG mitigation potential of a biochar material, for the *IBI*
21 *Biochar Certification Program* or otherwise.

22 Different feedstock types, and hence differentiated testing requirements of biochar, are defined
23 in this guidance document as means for the identification and classification of a range of
24 biochar materials. The testing categories are based upon increasing levels of physicochemical
25 property reporting and not necessarily on increasing levels of biochar performance or quality.
26 The intended audiences for these *IBI Biochar Standards* include commercial biochar
27 manufacturers, users, regulators, researchers and marketers, as well as the many national and
28 regional biochar affiliates of the IBI. However, the commercial biochar manufacturer is the
29 entity most likely to apply the *IBI Biochar Standards*, as a label (of differentiation) on its biochar
30 material or product.

31

2 Terms and Definitions

A complete list of terms and definitions is found, along with a list of acronyms, in Appendix 8 *Glossary*. A clear understanding of the defined terms is essential to the proper use of these *IBI Biochar Standards*. Defined terms are indicated with a double underline in the text on the first instance of the use of that term in the following sections.

3 Biomass Feedstock Material and Biochar Production

3.1 General Feedstock Material Requirements

The materials used as feedstocks for biochar production have direct impacts on the nature and quality of the resulting biochar. Although the focus of this document is on the biochar material, some restrictions have been applied to feedstock contents and quality. To qualify as biochar feedstock under these standards, the feedstock may be a combination of biomass and diluents, but may not contain more than 2% by dry weight of contaminants (following Brinton 2000). Any diluents that constitute 10% or more by dry weight of the feedstock material must be reported as a feedstock component. Feedstocks are differentiated into two types: unprocessed feedstocks and processed feedstocks, with different requirements for sampling and analysis of potential toxic substances. Suitable feedstocks include but are not limited to biomass residues, which may contain a minimal quantity of contaminants (see above) as part of the feedstock.

Feedstock that may have been grown on contaminated soils is considered to be a processed feedstock and must meet the toxicant assessment testing frequency requirements for processed feedstocks given in Section 5.5 *Category B Testing Frequency*.

Municipal Solid Waste (MSW) containing hazardous materials or wastes may not be included as eligible feedstock under these standards. It is the manufacturer's responsibility to ensure that biochar feedstock materials are free of hazardous materials.

NB: Issues of feedstock sustainability are not addressed in this document.

3.2 Best Management Practices for Biochar Production, Material Handling and Storage

The *IBI Biochar Standards* do not prescribe production and handling parameters for biochar, but do include recommended best management practices (BMPs) for safe production and handling. It is the responsibility of the biochar manufacturer to create biochar in a safe manner. IBI recommends that current industry BMPs be followed throughout the production and handling process.

Local requirements and regulations for the operation of biochar production facilities should be followed. Where applicable, biochar production must comply with local and international regulatory requirements and treaties that govern thermal processes, the production of volatile and particulate emissions, and the transport of goods. Relevant to local and international

1 regulatory compliance, biochar manufacturers should adhere to the following recommended
2 BMPs:

- 3 1) A biochar manufacturer should provide a relevant material safety data sheet (MSDS) for the
4 final output of its biochar production process. Brief outlines of MSDS document creation are
5 available from numerous online sources, including [MSDS Search](#), the [Canadian Center for
6 Occupational Health and Safety](#), and the [US Department of Labor Occupational Safety and
7 Health Administration](#) (OSHA).
- 8 2) Biochar should be tested to address the potential for self-heating and flammability during
9 storage and transport. Documentation of the results of this testing should be appended to
10 the MSDS.
- 11 3) To minimize the effects of weathering which can significantly alter the material properties of
12 biochar after it has been tested (see Section 5.6), biochar should be stored indoors in a
13 protected location. If stored outdoors, biochar should be covered with a tarpaulin or other
14 material to protect it from precipitation events.

15 While the IBI does not require these practices as part of its definition and certification of
16 biochar (under the *IBI Biochar Certification Program*) since they do not relate directly to product
17 quality, they are important considerations in good business practices and responsible industrial
18 production. The majority of industrialized nations provide detailed standards, expectations, and
19 regulations governing the manufacturing sector and will have relevant information available to
20 industrial operators.

21 **4 Biochar Material Test Categories and Characteristics**

22 As described in this section, biochar characteristics shall be assessed according to a defined set
23 of test categories intended to provide increasing levels of physicochemical property reporting.
24 Two sets of required test categories to measure basic biochar characteristics that impact soil
25 functions are supplemented with an optional test category for advanced analysis and soil
26 enhancement properties. Toxicant assessment testing is required for all biochars. Increasing
27 levels of physicochemical property testing and reporting do not correspond to increasing levels
28 of biochar performance or quality; rather, the categorization structure is designed to:

- 29 • provide a uniform presentation format by which a biochar user would be able to fairly
30 compare and assess the reported properties of different biochar materials;
- 31 • provide a set of required tests for basic biochar utility and an optional set of additional
32 tests for measuring advanced analysis and soil enhancement properties; and
- 33 • require toxicant reporting appropriate to the potential risks associated with both
34 unprocessed and processed feedstocks. Increased testing frequency is required to attain
35 quality assurance for processed feedstocks, which carry a higher potential risk of
36 contamination.

1 Each test category was developed according to an assessment of the relevant parameters for
2 biochar properties and safety, balanced against cost and accessibility.

3 These *IBI Biochar Standards* identify three categories of tests for biochar materials:

4 Test Category A – Basic Utility Properties: ***Required for all biochars***. This set of tests
5 measures the most basic properties required to assess the utility of a biochar material
6 for use in soil.

7 Test Category B – Toxicant Assessment: ***Required for all biochars***. Biochars made
8 from processed feedstocks must be tested more frequently than biochars made from
9 unprocessed feedstocks, as defined in Section 5 *General Protocols and Restrictions*.

10 Test Category C – Advanced Analysis and Soil Enhancement Properties: Optional for all
11 biochars. Biochar may be tested for advanced analysis and enhancement properties in
12 addition to meeting test requirements for Test Categories A and B. All tests in Test
13 Category C are optional. Manufacturers may report on none, one, some or all of the
14 properties.

15 Further details on each of the test categories are provided in Sections 4.1 through 4.3.

16 **4.1 Test Category A: Basic Utility Properties**

17 All biochars must be tested for basic utility properties and meet the criteria specified under Test
18 Category A, as shown in Table 1 below. Basic biochar characteristics include the physical
19 properties of particle size and moisture, as well as the chemical properties of elemental
20 proportions [Hydrogen (H), Carbon (C), and Nitrogen (N)], ash proportion, Electrical
21 Conductivity (EC) and pH/liming ability. Organic carbon (C_{org}) content is used to assign the
22 biochar material to one of three classes depending on the percentage of C_{org} in the material and
23 representing the range of C_{org} contents typical of biochar materials. Carbon stability is indicated
24 by the molar ratio of hydrogen to organic carbon. Lower values of this ratio are correlated with
25 greater carbon stability. See Appendix 7 *The Use of $H:C_{org}$ to Indicate C Stability* for more
26 information on this analysis.

27

1 **Table 1. Test Category A Parameters, Criteria, and Test Methods.**

Test Category A: Basic Utility Properties (Required for All Biochars)			
Parameter	Criteria¹	Unit	Test Method²
Moisture	Declaration	% of total mass, dry basis	ASTM D1762-84 Standard Test Method for Chemical Analysis of Wood Charcoal (specify measurement date with respect to time from production)
Organic Carbon (C _{org})	10% Minimum <i>Class 1: ≥60%</i> <i>Class 2: ≥30% and <60%</i> <i>Class 3: ≥10% and <30%</i>	% of total mass, dry basis	Total C and H analysis by dry combustion-elemental analyzer. Inorganic C analysis by determination of CO ₂ -C content with 1N HCl, as outlined in ASTM D4373 Standard Test Method for Rapid Determination of Carbonate Content of Soils. Organic C calculated as Total C – Inorganic C. See Appendix 7 for H:C _{org} discussion.
H:C _{org}	0.7 Maximum	Molar ratio	
Total Ash	Declaration	% of total mass, dry basis	ASTM D1762-84 Standard Test Method for Chemical Analysis of Wood Charcoal
Total Nitrogen	Declaration	% of total mass, dry basis	Dry combustion-elemental analyzer following the same procedure for total C and H above.
pH	Declaration	pH	pH analysis procedures as outlined in section 04.11 of TMECC (2001) using modified dilution of 1:20 biochar:deionized H ₂ O (w:v) and equilibration at 90 minutes on the shaker, according to Rajkovich et al. (2011). See Appendix 5 for further information.
Electrical Conductivity	Declaration	dS/m	EC analysis procedures as outlined in section 04.10 of TMECC (2001) using modified dilution of 1:20 biochar:deionized H ₂ O (w:v) and equilibration at 90 minutes on the shaker, according to Rajkovich et al. (2011). See Appendix 5 for further information.
Liming (if pH is above 7)	Declaration	% CaCO ₃	AOAC 955.01 potentiometric titration on “as received” (i.e., wet) samples. Use dry weight to calculate % CaCO ₃ and report “per dry sample weight”.
Particle size distribution	Declaration	% <0.5 mm; % 0.5-1 mm; % 1-2 mm; % 2-4 mm; % 4-8 mm; % 8-16 mm; % 16-25 mm; % 25-50 mm; % >50 mm	Progressive dry sieving with 50 mm, 25 mm, 16 mm, 8mm, 4mm, 2 mm, 1 mm, and 0.5 mm sieves.

¹ All values will be reported to one decimal place significant digit (0.1), unless otherwise indicated within the criteria for any reporting requirement (e.g., if the analysis is 0.73, it can be reported as 0.7).

² See Section 8 – References for complete citations

1

2 4.2 Test Category B: Toxicant Assessment

3 In addition to Test Category A thresholds and declarations, all biochar materials must meet the
4 soil toxicity assessment thresholds as outlined in Table 2 below. Toxicants may be divided into
5 two categories: those that may be present in the feedstocks used (metals and polychlorinated
6 biphenyls), and those that may be produced by the thermochemical conversion process used to
7 make biochar (polycyclic aromatic hydrocarbons and dioxins/furans).

8 Biochar made from processed feedstocks may carry additional risks from the potential presence
9 of toxicants in the feedstock and must meet the toxicant assessment testing frequency
10 requirements of Section 5.3.

11 Biochar toxicity assessment reporting follows commonly identified soil toxicity and chemical
12 content reporting requirements for soil amendments, composts and fertilizers. The threshold
13 values in Table 2 are given as a range of values based on standards for soil amendments or
14 fertilizers from a number of jurisdictions.³ The Maximum Allowed Thresholds (MAT) indicate
15 toxicant levels above which the material would not be considered acceptable. In order to meet
16 the requirements of these *IBI Biochar Standards*, reported toxicant levels must be below the
17 MAT that has been established in the area of jurisdiction where biochar is produced and/or
18 intended for use. If the area of jurisdiction where the biochar will be used has no threshold for
19 a particular toxicant, the biochar must be below the highest maximum value established by a
20 different jurisdiction for that toxicant. See Appendix 1 *Expanded Information on Test Methods*
21 *in Category B Toxicants Assessment*, Appendix 2 *PAH, PCDD/F and PCB Compounds to be*
22 *Tested*, and Appendix 3 *Toxicant Assessment and Determination of Thresholds* for more
23 information.

24 **Table 2. Test Category B Parameters, Maximum Allowed Thresholds and Test Methods.**

Test Category B: Toxicant Assessment (Required for All Biochars)		
Parameter	Range of Maximum Allowed Thresholds	Test Method ^{4, 5, 6}
Germination Inhibition Assay	Pass/Fail	OECD methodology (1984) using three test species, as described by Van Zwieten et al. (2010). See Appendix 5 for further information.

25

³ The following jurisdictions were used to construct the range of values: Australia, Canada, EU, UK, and the USA. These entities were chosen as reference countries because they all have a long history of regulations addressing these toxicants in soils and other substrates.

⁴ See Section 7 *References* for complete citations.

⁵ For parameters using US Environmental Protection Agency (EPA) test methods, it is required to use the most recent EPA revision of the test method.

⁶ For parameters using test methods described in the TMECC, please review Appendix 1 for descriptions of the test methods.

Table 2 (continued). Test Category B Parameters, Maximum Allowed Thresholds and Test Methods.

Parameter	Range of Maximum Allowed Thresholds		Test Method
Polycyclic Aromatic Hydrocarbons (PAHs), total (sum of 16 US EPA PAHs) ⁷	6 – 300	mg/kg ⁸ dry wt	US EPA 8270 (2007) using Soxhlet extraction (US EPA 3540) and 100% toluene as the extracting solvent
Dioxins/Furans (PCDD/Fs) ⁹	17	ng/kg WHO-TEQ ¹⁰ dry wt	US EPA 8290 (2007)
Polychlorinated Biphenyls (PCBs) ¹¹	0.2 – 1	mg/kg dry wt	US EPA 8082 (2007) or US EPA 8275 (1996)
Arsenic	13 – 100	mg/kg dry wt	TMECC (2001)
Cadmium	1.4 – 39	mg/kg dry wt	TMECC (2001)
Chromium	93 – 1200	mg/kg dry wt	TMECC (2001)
Cobalt	34 – 100	mg/kg dry wt	TMECC (2001)
Copper	143 – 6000	mg/kg dry wt	TMECC (2001)
Lead	121 – 300	mg/kg dry wt	TMECC (2001)
Mercury	1 – 17	mg/kg dry wt	US EPA 7471 (2007)
Molybdenum	5 – 75	mg/kg dry wt	TMECC (2001)
Nickel	47 – 420	mg/kg dry wt	TMECC (2001)
Selenium	2 – 200	mg/kg dry wt	TMECC (2001)
Zinc	416 – 7400	mg/kg dry wt	TMECC (2001)
Boron	Declaration	mg/kg dry wt	TMECC (2001)
Chlorine	Declaration	mg/kg dry wt	TMECC (2001)
Sodium	Declaration	mg/kg dry wt	TMECC (2001)

⁷ For a list of the required PAH compounds to be tested see Appendix 2.

⁸ PAHs must also be reported on a B(a)P toxic equivalency basis with a maximum level of 3 mg/kg B(a)P-TEQ dry weight. See Appendix 3 for further information on TEF values for PAHs.

⁹ For a list of the required PCDD/F compounds to be tested see Appendix 2.

¹⁰ See Appendix 3 for further information on the WHO 2005 TEF values for PCDD/Fs.

¹¹ For a list of the required PCB compounds to be tested see Appendix 2.

1

2 4.3 Test Category C: Advanced Analysis and Soil Enhancement 3 Properties

4 Test Category C is optional for all biochar materials. Manufacturers may report on none, one,
5 some, or all of the properties contained in the Test Category C set of advanced analysis and soil
6 enhancement properties, using the prescribed test methods. Biochar advanced analysis
7 characteristics include the volatile matter content and surface area of biochars. Biochar soil
8 enhancement properties identify plant nutrients contained in the biochar.

9 Biochars tested under Test Category C may report on any or all of the properties presented in
10 Table 3 below:

11 **Table 3: Test Category C Parameters, Criteria, and Test Methods.**

Test Category C: Advanced Analysis and Soil Enhancement Properties (Optional for All Biochars)			
Parameter	Criteria	Unit	Test Method¹²
Mineral (available) Nitrogen (ammonium and nitrate)	Declaration	mg/kg	2M KCl extraction followed by spectrophotometry (Rayment and Higginson 1992)
Total Phosphorus & Potassium*	Declaration	mg/kg	Modified dry ashing (Enders and Lehmann 2012). Elements in the digest determined by common analytical techniques.
Available Phosphorous	Declaration	mg/kg	2% formic acid followed by spectrophotometry (Wang et al. 2012)
Total Calcium, Magnesium and Sulfur	Declaration	mg/kg	Modified dry ashing (Enders and Lehmann 2012). Elements in the digest determined by common analytical techniques.
Available Calcium, Magnesium and Sulfate-S	Declaration	mg/kg	1M HCl extraction (Camps Arbostain et al. 2015). Elements in the digest determined by common analytical techniques.
Volatile Matter	Declaration	% of total mass, dry basis	ASTM D1762-84 Standard Test Method for Chemical Analysis of Wood Charcoal
Total Surface Area	Declaration	m ² /g	ASTM D6556 Standard Test Method for Carbon Black – Total and External Surface Area by Nitrogen Adsorption. See Appendix 5 for further information.
External Surface Area	Declaration	m ² /g	
* Total K is sufficiently equivalent to available K for the purpose of this characterization			

12

¹² See Section 7 *References* for complete citations.

5 General Protocols and Restrictions

Biochar manufacturers must follow the protocols described in this section that address biochar sampling procedures; the selection of testing laboratories; timing and frequency of testing; special testing requirements related to material changes in feedstocks or thermochemical production parameters, or to biochar processing after thermochemical conversion; and restrictions on biochar that has undergone weathering.

5.1 Biochar Sampling Procedures

Strict adherence to standardized biochar sampling procedures is critical to ensure reliable, representative, and replicable test results. Manufacturers should adhere to the sampling procedures outlined in Appendix 4 *Biochar Sampling Procedures*, drawn from established compost sampling procedures, but adapted specifically for biochar. Adherence to these biochar sampling procedures will ensure that the sample collected is representative of the entire biochar material being analyzed.

5.2 Laboratory Standards

Laboratory analysis of biochar shall be conducted by trained and accredited laboratory professionals following the appropriate procedures outlined for each test. [Please refer to Appendix 5 *Recommended General Sample Analysis Procedures and Protocols for Specific Tests* for further guidance on sample handling and processing prior to analysis.] Testing shall follow strict quality assurance and control (QA/QC) requirements according to standardized laboratory procedures. Laboratory professionals are expected to be trained in the relevant field of analytical chemistry and operate in professional laboratories that have received general laboratory accreditation. Such accreditation should be provided by a relevant governing body or an international standards body like the ISO. Examples of accreditation bodies and programs in the U.S. include: the National Environmental Laboratory Accreditation Program (NELAP; <http://www.nelac-institute.org/newnelap.php>) and the American Association for Laboratory Accreditation (A2LA; <http://www.a2la.org/>). Internationally, accreditation bodies include: ISO/IEC 17025:2005 "General Requirements for the Competence of Testing and Calibration Laboratories" (http://www.iso.org/iso/catalogue_detail.htm?csnumber=39883). While accreditation by these bodies (and others not listed above) does not directly assert biochar testing competency, adherence to protocols overseen by accreditation bodies and set forth in each individual laboratory's internal QA/QC programs do provide assurances that contributing laboratories will provide reliable and replicable results and that an appropriate standard of quality is met. Laboratories are expected to provide information describing their internal QA/QC programs as well as their participation in laboratory accreditation programs.

5.3 Timing and Frequency of Testing

Testing of biochar materials should occur after thermochemical processing is complete and before application to soils. Biochar testing and reporting of all Category A, B, and C tests according to the *IBI Biochar Standards* shall be performed:

- annually; or

- 1 - after a material change in feedstock; or,
- 2 - after a material change in thermochemical production parameters; or
- 3 - whichever is more frequent.

4 **5.4 Material Changes in Feedstock and Thermochemical Production** 5 **Parameters**

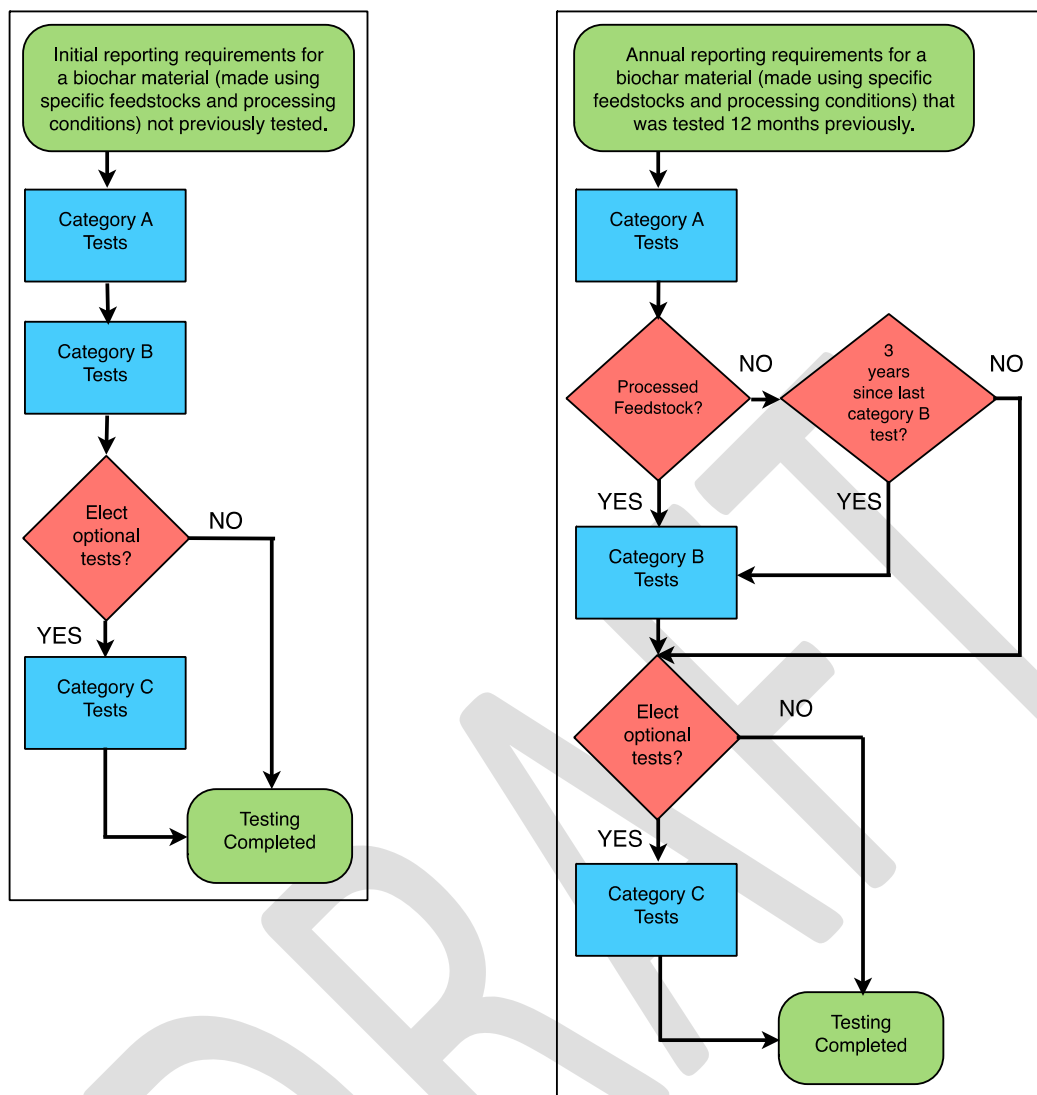
6 Significant changes in feedstock composition may lead to materially different biochar products.
7 For this reason, a 10% or greater change in total feedstock composition shall constitute a
8 material change in feedstock, pursuant to these *IBI Biochar Standards*. See Appendix 6
9 *Determining a "Material Change" in Feedstock* for detailed information on how to determine a
10 material change in feedstock composition.

11 Material changes in thermochemical production parameters reflect increases or decreases in
12 process temperature or residence time. A material change in thermochemical production
13 parameters has occurred if process temperature (also known as heat treatment temperature)
14 changes by +/- 50°C, or if the thermochemical processing time (residence time) changes by
15 more than 10%.

16 **5.5 Category B Testing Frequency**

17 Category B Toxicant Assessment tests shall follow the test frequency and reporting
18 requirements outlined above, with *the following exception for unprocessed feedstocks*:

- 19 - Category B tests may be repeated every three years rather than annually, as long as
20 there is no material change in the thermochemical production parameters or the
21 feedstock composition. Figure 1 below depicts a set of two process flow charts that
22 compare the initial testing requirements for all feedstock materials with the annual
23 testing requirements, showing how the exception for unprocessed feedstocks is
24 incorporated.



1
2 **Figure 1. Process flow charts showing testing protocols for initial testing and annual**
3 **retesting of biochar materials.**

4 **5.6 Testing Requirements for Weathered Biochar**

5 Biochar weathering may occur when biochar is exposed to precipitation, ice, freeze-thaw cycles,
6 fluctuations in temperature, deposition of atmospheric chemicals, and/or exposure to ambient
7 air. All of these factors may alter the biochar and its physicochemical properties by changing its
8 physical structure and/or its chemical properties through oxidation, hydration, leaching, or other
9 processes. In many instances biochar weathering can be a beneficial process that enhances the
10 material properties of the biochar.

11 Biochar that is stored uncovered outdoors is subject to the most extreme physical and chemical
12 weathering. Furthermore, weathering affects biochar differentially depending on the type and
13 extent of exposure, the properties of specific biochars, and biochar storage conditions. For
14 example, if a large pile of biochar has been stored outside and rained on extensively, material

1 at or near the surface may experience differential weathering than material at the center of the
2 pile.

3 Because of the non-uniform and unpredictable changes caused by weathering, the *IBI Biochar*
4 *Standards* provide specific testing requirements for biochar material that has been exposed to
5 “significant weathering” which, for the purposes of the *IBI Biochar Standards*, is deemed to
6 occur when *biochar has been stored outdoors uncovered and has experienced any precipitation*
7 *events*.

8 The testing requirements for biochar that has experienced significant weathering depend on
9 whether the material has already been sampled and tested as follows:

- 10 - In cases where significant weathering occurs *before* biochar has been sampled and
11 submitted for testing, the entire batch of weathered biochar must be thoroughly mixed
12 to achieve material uniformity prior to sampling; and
- 13 - In cases where significant weathering occurs *after* biochar has been sampled and
14 tested, *the entire batch of weathered biochar must be re-sampled and re-tested* for all
15 of the required tests. Prior to re-sampling the entire batch of weathered biochar must be
16 thoroughly mixed to achieve material uniformity.

17 Furthermore, it is the responsibility of the biochar producer to re-sample and re-test a biochar if
18 any other weathering events besides precipitation are believed to substantially change the
19 physicochemical properties of the biochar that has already been sampled and tested.

20 **5.7 Timing of Testing for Post-Processed Biochar**

21 After thermochemical conversion of feedstock(s) to biochar, additional steps may be taken by
22 the biochar manufacturer to enhance, transform, or otherwise alter the physical, chemical or
23 biological properties of the biochar material. For the purposes of these *IBI Biochar Standards*,
24 such actions are called post-processing. In order for test results to accurately reflect biochar
25 material properties, the timing of testing with respect to different types of post-processing
26 treatments is critical. Therefore, biochar manufacturers who utilize post-processing must adhere
27 to the following guidelines for timing of testing:

- 28 1) Biochar testing shall occur *before* the following types of post-processing, which constitute
29 the addition of non-biochar materials to the biochar:
 - 30 a) *biological activation* including, but not limited to, treatment with microorganisms,
31 organic compounds, and/or nutrients in a biologically active environment; or
 - 32 b) *mixing, blending, or adding* any non-biochar material including, but not limited to,
33 compost, fungal mycorrhizae, ash, minerals, chemical fertilizers, animal manure,
34 microbes, and seaweed.
- 35 2) Biochar testing shall occur *after* the following types of post-processing:
 - 36 a) *steam activation*; or

- 1 b) *chemical activation* including treatment with acid or alkaline substances or oxygen (O₂);
- 2 or
- 3 c) *UV or concentrated solar light treatment*; or
- 4 d) *microwave or ultrasonic treatment*; or
- 5 e) *crushing, grinding, milling, pelletizing, selective segregation* or any other form of
- 6 processing intended to alter or limit biochar particle size; or
- 7 f) *weathering* of biochar—whether intentional or unintentional—that has been stored
- 8 outdoors uncovered and experienced precipitation events.

9 Further, for those types of post-processing where testing is required to occur after post-
10 processing treatments (listed in (2) above), *the biochar material must be re-tested if post-*
11 *processing parameters are altered such that the physicochemical properties of the post-*
12 *processed biochar material are rendered substantively different from the previously tested*
13 *material.*

14 **5.8 Provisions for High Carbon Biomass Ash**

15 Biomass-fueled power generating stations produce biomass ash as a byproduct of energy
16 generation. Biomass ash—or fractions thereof, including bottom ash and flyash—may display
17 physicochemical properties that are similar to biochar materials, including high organic carbon
18 content. Such materials may pass the required tests in Test Categories A and B of the *IBI*
19 *Biochar Standards*. However, concern exists around 1) the potential formation and accumulation
20 of toxicants in biomass ash including PAHs, PCDD/Fs, and heavy metals (Van Loo and Koppejan
21 2007; Vassilev et al 2013), and 2) the ability of the operator of the biomass boiler or furnace
22 (i.e., the biochar manufacturer) to meet and document “material change” requirements outlined
23 in Section 5.4.

24 Because of concerns outlined above, IBI requires the following provisions for consideration of
25 high carbon biomass ash under the *IBI Biochar Standards*:

- 26 1) Only biomass ash produced from clean cellulosic biomass may be utilized. A statement
27 signed by the producer of the biomass ash (see 2) below) stating that the facility only
28 utilizes clean cellulosic biomass must be provided.
- 29 2) The producer of the biomass ash (i.e., the operator of the biomass boiler or furnace) is
30 deemed to be the biochar manufacturer. Note that this means that an intermediary (i.e., an
31 entity that acquires and distributes and/or markets the biomass ash) does not qualify as the
32 manufacturer of the biochar pursuant to the *IBI Biochar Standards*.
- 33 3) In cases in which some fraction of the high carbon ash is segregated from the total ash
34 product, the following applies:
 - 35 a) Material flow through the bioenergy production facility including the segregation process
36 whereby the high carbon ash fraction is segregated from other ash fractions must be
37 documented and clearly describe the ability to produce a consistent and uniform
38 product.

- 1 b) The manufacturer must state which fraction of biomass ash is being utilized (bottom ash
2 and/or flyash).
- 3 c) All documentation related to the segregation process must be retained per the
4 requirements of Section 5.9 Conformity and Record Keeping.
- 5 4) In addition to testing requirements described in Section 5.3 Timing and Frequency of
6 Testing, the following ongoing sampling and testing plan must be adhered to:
- 7 a) A grab sample shall be taken of every batch of biomass ash produced by the
8 manufacturer. All grab samples shall be clearly labeled and archived for a period of one-
9 year.
- 10 b) At the end of each quarter, all grab samples shall be composited into one quarterly
11 composite sample. All quarterly composite samples shall be clearly labeled and archived
12 for a period of one-year.
- 13 c) Composite samples shall be tested every quarter by an independent laboratory (see
14 Section 5.2 Laboratory Standards) for: PAHs, PCDD/Fs, arsenic, cadmium, chromium,
15 cobalt, copper, lead, mercury, molybdenum, nickel, selenium, and zinc.
- 16 d) If tests results for any of the parameters in c) above exceed the Maximum Allowed
17 Thresholds (see Appendix 3 Toxicant Assessment and Determination of Thresholds),
18 that batch of biomass ash does not meet the requirements of the *IBI Biochar Standards*
19 and may not be considered for certification under the *IBI Biochar Certification Program*.
- 20

21 **5.9 Conformity and Record Keeping**

22 The biochar manufacturer must keep detailed records of biochar feedstock(s), including chain of
23 custody, and mandatory and optional test results in order to provide assurance of end-product
24 properties. Chain of custody and biochar traceability demonstrate that adequate care and
25 transparency has been exercised along the entire biochar production and supply chain to enable
26 trace-back of the biochar product beginning with feedstock providers to biochar manufacturers
27 through to end users.

28 Record keeping is highly recommended (and is required for participation in the *IBI Biochar*
29 *Certification Program*) in order to establish proof of adequate sampling, testing, and results.
30 Documentation of biochar feedstock (see Appendix 6 for guidelines on identifying categories of
31 feedstocks) and type (unprocessed or processed), thermochemical production parameters
32 (processing temperature and processing time), and test results should be kept for seven years.
33 Individual biochar manufacturers may wish to consult with a local attorney to determine
34 whether recordkeeping for longer than seven years is appropriate, in light of state, regional, or
35 provincial laws regarding product liability claims.

36 **6 Revisions to the *IBI Biochar Standards***

37 IBI will make periodic revisions to the *IBI Biochar Standards* based on further developments in
38 the fields of biochar science and technology, regulatory changes, and feedback from the public,

1 particularly users of the *IBI Biochar Standards*. Revisions occur in two forms—policy revisions
2 and technical program revisions—and are effective the date of publication on IBI’s website.

3 **6.1 Policy revisions**

4 Policy revisions occur when there is a substantive change to the policies, rules, and/or scope of
5 the *IBI Biochar Standards* that may change the eligibility or acceptability of a biochar material.
6 A policy revision creates a new version of the *IBI Biochar Standards* (e.g., Version 1.0
7 undergoes a policy revision to become Version 2.0). Examples of policy revisions include:
8 changes to feedstock parameters such as the threshold for contaminants; the addition of new
9 toxicants under Test Category B; changes in testing timing and frequency for biochars derived
10 from processed feedstocks; or changes to the “material change” threshold for mixed feedstocks.

11 When policy revisions are warranted, IBI may convene an expert panel or reach out to experts
12 involved in the development of the *IBI Biochar Standards*. The experts may be asked to provide
13 insight and guidance on the identified policy issues prior to a revised draft of the *IBI Biochar*
14 *Standards* being circulated for a 30-day public comment period. IBI will incorporate feedback
15 gathered during the public comment period before publishing the final revised version.

16 **6.2 Technical program revisions**

17 Technical program revisions occur when technical or editorial changes are deemed necessary.
18 Technical program revisions create a new sub-version of the *IBI Biochar Standards* (e.g.,
19 Version 1.0 undergoes a technical program revision to become Version 1.1). Examples of
20 technical program revisions include: changes to recommended test methods in Test Categories
21 A, B or C; changes to sampling procedures for biochar analysis; or changes to the Maximum
22 Allowed Thresholds for Test Category B toxicants based on revised guidance from regulatory
23 bodies.

24 In the event of the need for a time-sensitive technical program revision, IBI may issue a
25 technical note to describe the technical program revision, prior to the publication of a new sub-
26 version of the *IBI Biochar Standards*. The issuance of the technical note will signal the
27 implementation of the technical program revision to users of the *IBI Biochar Standards* and will
28 be effective the date of publication on IBI’s website.

29 As with policy revisions, IBI may seek guidance from experts when considering technical
30 program revisions. However, a public comment period is not required and IBI will publish the
31 revised sub-version of the *IBI Biochar Standards* once the identified issues have been resolved.

32 **7 References**

33 Amlinger, F., Faroino, E., and Pollack, M. (2004) *EU Heavy Metals and Organic Compounds from*
34 *Waste Used as Organic Fertilizers Final Report*. ENV.A.2./ETU/2001/0024 REF.NR.:
35 TEND/AML/2001/07/20. (Accessed January 2012)

- 1 AOAC (Association of Analytical Communities) International (2005) *Official Methods of Analysis*.
2 *18th Edition*. Latimer, G. (Ed.) www.eoma.aoc.org (accessed September 2011)
- 3 ASTM International (2009) *ASTM D6556-10 Standard Test Method for Carbon Black—Total and*
4 *External Surface Area by Nitrogen Adsorption*
5 <http://www.astm.org/Standards/D6556.htm> (accessed January 2012)
- 6 ASTM International (2007) *ASTM D1762-84 (2007) Standard Test Method for Chemical Analysis*
7 *of Wood Charcoal* <http://www.astm.org/Standards/D1762.htm> (accessed September
8 2011)
- 9 ASTM International (2007) *ASTM D4373-02 (2007) Standard Test Method for Rapid*
10 *Determination of Carbonate Content of Soils* <http://www.astm.org/Standards/D4373.htm>
11 (accessed March 2013)
- 12 Brinton, W.F. (2000) *Compost quality standards and guidelines*. Woods End Research
13 Laboratory, prepared for New York State Association of Recyclers.
14 <http://compost.css.cornell.edu/Brinton.pdf> (accessed September 2011)
- 15 Bureau de normalisation du Québec (2005) *National Standard of Canada, Organic Soil*
16 *Conditioners – Compost*. CAN/BNQ 0413-200 (2005) ISBN: 2-551-22659-7 [http://www-](http://www-es.criq.gc.ca/pls/owa_es/bnqw_norme.detail_norme?p_lang=en&p_id_norm=8184&p_code_menu=NORME)
17 [es.criq.gc.ca/pls/owa_es/bnqw_norme.detail_norme?p_lang=en&p_id_norm=8184&p_c](http://www-es.criq.gc.ca/pls/owa_es/bnqw_norme.detail_norme?p_lang=en&p_id_norm=8184&p_code_menu=NORME)
18 [ode_menu=NORME](http://www-es.criq.gc.ca/pls/owa_es/bnqw_norme.detail_norme?p_lang=en&p_id_norm=8184&p_code_menu=NORME) (accessed September 2011)
- 19 Camps Arbestain M, J.E. Amonette, B. Singh, T. Wang, H-P. Schmidt. 2015. *A Biochar*
20 *Classification System and Associated Test Methods*. In: *Biochar for Environmental*
21 *Management - Science and Technology*, 2nd edition. J. Lehmann and S. Joseph (eds.).
22 Routledge.
- 23 Canadian Council of Ministers of the Environment (CCME) (2002) *Canadian Soil Quality*
24 *Guidelines for the Protection of Environmental and Human Health: Polychlorinated*
25 *Dibenzo-p-Dioxins and Polychlorinated Dibenzofurans (PCDD/Fs)*. In: Canadian
26 environmental quality guidelines, 1999, Canadian Council of Ministers of the
27 Environment, Winnipeg Manitoba, Canada. ISBN 1-896997-34-1 [http://ceqg-](http://ceqg-rcqe.ccme.ca/)
28 [rcqe.ccme.ca/](http://ceqg-rcqe.ccme.ca/) (accessed March 2013)
- 29 Canadian Council of Ministers for the Environment (CCME) (2005) *Guidelines for Compost*
30 *Quality*. PN 1340 Winnipeg Manitoba, Canada. ISBN 1-896997-60-0.
- 31 Enders, A. and Lehmann, J. (2012) Comparison of wet digestion and dry ashing methods for
32 total elemental analysis of biochar. *Communications in Soil Science and Plant Analysis*.
33 43:1042–1052.
- 34 European Commission Agriculture and Rural Development (2010) *Biomass Potential*
35 http://ec.europa.eu/agriculture/bioenergy/potential/index_en.htm (accessed September
36 2011)
- 37 European Commission COM (2006) *Establishing a Framework for the Protection of Soil and*
38 *Amending Directive 2004/35/EC*. <http://eur->

- 1 lex.europa.eu/LexUriServ/LexUriServ.do?uri=CELEX:52006PC0232:en:NOT (accessed
2 April 2013)
- 3 Hilber I., Blum F., Leifeld J., Schmidt H.-P., Bucheli T. *Quantitative determination of PAHs in*
4 *biochar: A prerequisite to ensure its quality and safe application.* Journal of Agricultural
5 and Food Chemistry. 60, (12), 2012, 3042-3050
- 6 International Biochar Initiative (2010) *IBI Guidelines for the Development and Testing of*
7 *Pyrolysis Plants to Produce Biochar* [http://www.biochar-](http://www.biochar-international.org/sites/default/files/IBI-Pyrolysis-Plant-Guidelines.pdf)
8 [international.org/sites/default/files/IBI-Pyrolysis-Plant-Guidelines.pdf](http://www.biochar-international.org/sites/default/files/IBI-Pyrolysis-Plant-Guidelines.pdf) (accessed
9 September 2011)
- 10 Milne, T.A.; Brennan, A.H.; Glenn, B.H. *Sourcebook of Methods of Analysis for Biomass*
11 *Conversion and Biomass Conversion Processes.* SERI/SP-220-3548. Golden, CO: Solar
12 Energy Research Institute, February 1990.
- 13 National Institute of Health, National Cancer Institute, *Dictionary of Cancer Terms,*
14 <http://www.cancer.gov/dictionary?cdrid=687391> (Accessed February 2012)
- 15 OECD Organisation for Economic Co-operation and Development (1984) Terrestrial Plants,
16 Growth Test no. 208. In *Guideline for Testing of Chemicals.*
17 <http://www.oecd.org/dataoecd/18/0/1948285.pdf>. (Accessed January 2012)
- 18 Rajan, S.S.S., Brown, M.W., Boyes, M.K., and Upsdell, M.P. (1992) Extractable phosphorus to
19 predict agronomic effectiveness of ground and unground phosphate rocks. *Nutrient*
20 *Cycling in Agroecosystems.* 32(3):291-302.
- 21 Rajkovich, S., Enders, A., Hanley, K., Hyland, C., Zimmerman, A.R., and Lehmann, J. (2011)
22 Corn growth and nitrogen nutrition after additions of biochars with varying properties to
23 a temperate soil. *Biology and Fertility of Soils* 48, 271–284.
- 24 Rayment, G.E. and Higginson, F.R. (1992). *Australian Laboratory Handbook of Soil and Water*
25 *Chemical Methods.* Reed International Books, Australia/ Inkata Press, Port Melbourne.
- 26 Rayment, G.E., and Lyons, D.J. (2011) *Soil Chemical Methods – Australasia.* CSIRO Publishing,
27 Collingwood, Victoria, Australia.
- 28 Stockholm Convention. *What are POPs?*
29 <http://chm.pops.int/Convention/ThePOPs/tabid/673/Default.aspx> (Accessed March 2012)
- 30 US Composting Council and US Department of Agriculture (2001) *Test methods for the*
31 *examination of composting and compost.* (TMECC) Thompson W.H. (ed.)
32 <http://compostingcouncil.org/tmecc/>. (Accessed January 2012)
- 33 US Environmental Protection Agency (2007) *METHOD 7471B MERCURY IN SOLID OR*
34 *SEMISOLID WASTE (MANUAL COLD-VAPOR TECHNIQUE).*
35 <http://www.epa.gov/osw/hazard/testmethods/sw846/pdfs/7471b.pdf> (Accessed
36 November 2013).

- 1 US Environmental Protection Agency (2007) *METHOD 8082A POLYCHLORINATED BIPHENYLS*
2 *(PCBs) BY GAS CHROMATOGRAPHY.*
3 <http://www.epa.gov/osw/hazard/testmethods/sw846/pdfs/8082a.pdf> (Accessed
4 November 2013)
- 5 US Environmental Protection Agency (2007) *METHOD 8270D SEMIVOLATILE ORGANIC*
6 *COMPOUNDS BY GAS CHROMATOGRAPHY/MASS SPECTROMETRY (GC/MS).*
7 <http://www.epa.gov/osw/hazard/testmethods/sw846/pdfs/8270d.pdf> (Accessed
8 November 2013)
- 9 US Environmental Protection Agency (1996) *METHOD 8275A Semivolatile organic compounds*
10 *(PAHs and PCBs) in soils/sludges and solid wastes using thermal extraction/gas*
11 *chromatography/mass spectrometry (TE/GC/MS).*
12 <http://www.epa.gov/osw/hazard/testmethods/sw846/pdfs/8275a.pdf> (Accessed
13 September 2011)
- 14 US Environmental Protection Agency (2007) *METHOD 8290A Polychlorinated Dibenzo-P-Dioxins*
15 *(PCDDs) and polychlorinated dibenzofurans (PCDFs) by high resolution gas*
16 *chromatography/high resolution mass spectrometry (HRGC/HRMS).*
17 <http://www.epa.gov/osw/hazard/testmethods/sw846/pdfs/8290a.pdf> (Accessed
18 September 2011)
- 19 US Environmental Protection Agency (1999) *Background report on fertilizer use, contaminants*
20 *and regulations.* Prepared by BATELLE, Columbus OH. National Program Chemicals
21 Division; Office of Pollution Prevention and Toxics, Washington D.C.
22 <http://www.epa.gov/oppt/pubs/fertilizer.pdf> via
23 <http://www.epa.gov/agriculture/tfer.html>. (Accessed February 2012)
- 24 US Geological Service. *Polynuclear Aromatic Hydrocarbons (PAHs)/Polycyclic Aromatic*
25 *Hydrocarbons (PAHs)* <http://toxics.usgs.gov/definitions/pah.html> (Accessed March
26 2012) Van Loo, S., & Koppejan, J. (Eds.). (2007). *The handbook of biomass combustion*
27 *and co-firing.* Earthscan.
- 28 Van Zwieten, L., Kimber, S., Morris, S., Chan, K.Y., Downie, A., Rust, J., Joseph, S., and Cowie,
29 A. (2010) Effects of biochar from slow pyrolysis of papermill waste on agronomic
30 performance and soil fertility. *Plant and Soil* 327:235-246. DOI 10.1007/s11104-009-
31 0050-x.
- 32 Vassilev, S. V., Baxter, D., Andersen, L. K., & Vassileva, C. G. (2013). An overview of the
33 composition and application of biomass ash.: Part 2. Potential utilisation, technological
34 and ecological advantages and challenges. *Fuel*, 105, 19-39.
- 35 Wang, T., Camps-Arbestain, M., Hedley, M., & Bishop, P. (2012). Predicting phosphorus
36 bioavailability from high-ash biochars. *Plant and soil*, 357(1-2), 173-187.

Appendix 1 – Expanded Information on Test Methods for Category B Toxicants Assessment

All of the elements (except mercury) in Test Category B Toxicants Assessment require the use of test methods outlined in the *Test Methods for the Examination of Composting and Compost* (TMECC; US Composting Council and US Department of Agriculture, 2001). These test methods involve a digestion step followed by a determination step. In some cases there are multiple digestion and/or determination methods allowable. Table A1.1 below provides clarification on the allowable digestion and determination methods for each parameter. Testing labs can choose the appropriate digestion and/or determination method when more than one method is listed for a given parameter. Table A1.2 provides a description of each test method that is abbreviated in Table A1.1.

Table A1.1. Allowable digestion and determination test methods for parameters in Category B that require the use of TMECC methods. For a description of each test method see table A1.2.

Parameter	Source (TMECC Chapter)	Test Method						
		Digestion Method					Determination Method	
		Digestion1	Digestion2	Digestion3	Digestion4	Digestion5	Determin1	Determin2
Arsenic	4.06	TMECC 04.12-A	TMECC 04.12-B	-	-	-	US EPA 7000	-
Cadmium	4.06	TMECC 04.12-A	TMECC 04.12-B	TMECC 04.12-E	-	-	US EPA 7000	US EPA 6010
Chromium	4.06	TMECC 04.12-A	TMECC 04.12-B	TMECC 04.12-E	-	-	US EPA 7000	US EPA 6010
Cobalt	4.05	TMECC 04.12-A	TMECC 04.12-B	TMECC 04.12-E	TMECC 04.12-D	TMECC 04.12-C	US EPA 7000	US EPA 6010
Copper	4.06	TMECC 04.12-A	TMECC 04.12-B	TMECC 04.12-E	-	-	US EPA 7000	US EPA 6010
Lead	4.06	TMECC 04.12-A	TMECC 04.12-B	TMECC 04.12-E	-	-	US EPA 7000	US EPA 6010
Molybdenum	4.06	TMECC 04.12-A	TMECC 04.12-B	TMECC 04.12-E	-	-	US EPA 7000	US EPA 6010
Nickel	4.06	TMECC 04.12-A	TMECC 04.12-B	TMECC 04.12-E	-	-	US EPA 7000	US EPA 6010
Selenium	4.06	TMECC 04.12-A	TMECC 04.12-B	-	-	-	US EPA 7000	US EPA 6010
Zinc	4.06	TMECC 04.12-A	TMECC 04.12-B	-	-	-	US EPA 7000	US EPA 6010
Boron	4.05	TMECC 04.12-A	TMECC 04.12-B	TMECC 04.12-D	-	-	US EPA 6010	-
Chlorine	4.05	TMECC 04.12-D	-	-	-	-	ion chromatography	ion-selective electrode
Sodium	4.05	TMECC 04.12-A	TMECC 04.12-B	TMECC 04.12-E	TMECC 04.12-D	TMECC 04.12-C	US EPA 7000	US EPA 6010

1 **Table A1.2. Description of TMECC and US EPA test methods in Table A1.1.**

TMECC Test Methods		
Method Number	Name	Adapted from
TMECC 04.12-A	microwave assisted nitric acid digestion for compost	US EPA 3051 (2007) microwave assisted acid digestion of sediments, sludges, soils and oils
TMECC 04.12-B	nitric acid digestion of compost and soils	US EPA 3050 (1996) acid digestion of sediments, sludges, and soils
TMECC 04.12-C	dry ash sample digestion for plant nutrients	AOAC method 985.01
TMECC 04.12-D	water soluble elements	n/a
TMECC 04.12-E	aqua regia procedure	n/a
US EPA 7000 (2007)	flame atomic absorption spectrophotometry	n/a
US EPA 6010 (2007)	inductively coupled plasma - atomic emission spectroscopy	n/a

2

3

4 **References**

5 US Composting Council and US Department of Agriculture (2001) *Test methods for the examination of composting and compost.*
 6 (TMECC) Thompson W.H. (ed.) <http://compostingcouncil.org/tmecc/> (Accessed January 2012).

7 US Environmental Protection Agency (1996) *Method 3050B ACID DIGESTION OF SEDIMENTS, SLUDGES, AND SOILS.*
 8 <http://www.epa.gov/osw/hazard/testmethods/sw846/pdfs/3050b.pdf> (Accessed November 2013).

9 US Environmental Protection Agency (2007) *Method 3051A MICROWAVE ASSISTED ACID DIGESTION OF SEDIMENTS, SLUDGES,*
 10 *SOILS, AND OILS.* <http://www.epa.gov/osw/hazard/testmethods/sw846/pdfs/3051a.pdf> (Accessed November 2013).

11 US Environmental Protection Agency (2007) *Method 6010C INDUCTIVELY COUPLED PLASMA-ATOMIC EMISSION SPECTROMETRY.*
 12 <http://www.epa.gov/osw/hazard/testmethods/sw846/pdfs/6010c.pdf> (Accessed November 2013).

13 US Environmental Protection Agency (2007) *Method 7000B FLAME ATOMIC ABSORPTION SPECTROPHOTOMETRY.*
 14 <http://www.epa.gov/osw/hazard/testmethods/sw846/pdfs/7000b.pdf> (Accessed November 2013).

15

Appendix 2 – PAH, PCDD/F and PCB Compounds to be Tested

PAHs, PCDD/Fs, and PCBs are each suites of related chemical compounds (congeners), sometimes numbering in the hundreds. The US EPA maintains a list of 126 Priority Pollutants as part of the Clean Water Act that have been determined to have detrimental human and environmental health impacts; these compounds must be reported under requirements of the Clean Water Act. Contained therein are the primary PAHs and PCBs of concern. For PCDD/Fs, the World Health Organization (WHO) maintains a list of the primary PCDD/Fs of concern as well as the toxic equivalency factor (TEF) of each PCDD/F (Van den Berg et al, 2005).

For the purposes of biochar testing for PAHs, PCDD/Fs, and PCBs, testing labs shall test for the following priority compounds as determined by the US EPA and WHO.

The 16 PAH priority compounds to be tested are:

	PAH	CAS number
1	Acenaphthene	83-32-9
2	Acenaphthylene	208-96-8
3	Anthracene	120-12-7
4	Benz(a)anthracene	56-55-3
5	Benzo(a)pyrene	50-32-8
6	Benzo(b)fluoranthene	205-99-2
7	Benzo(k)fluoranthene	207-08-9
8	Benzo(ghi)perylene	191-24-2
9	Chrysene	218-01-9
10	Dibenz(a,h)anthracene	53-70-3
11	Fluoranthene	206-44-0
12	Fluorene	86-73-7
13	Indeno(1,2,3-cd)pyrene	193-39-5
14	Naphthalene	91-20-3
15	Phenanthrene	85-01-8
16	Pyrene	129-00-0

The 7 PCB priority compounds to be tested are:

	PCB	CAS number
1	Aroclor 1016	12674-11-2
2	Aroclor 1221	11104-28-2
3	Aroclor 1232	11141-16-5
4	Aroclor 1242	53469-21-9
5	Aroclor 1248	12672-29-6
6	Aroclor 1254	11097-69-1
7	Aroclor 1260	11096-82-5

The 17 PCDD/PCDF congeners to be tested are:

	PCDD/F	Acronym
1	2,3,7,8-Tetrachlorodibenzo-p-dioxin	TCDD
2	1,2,3,7,8-Pentachlorodibenzo-p-dioxin	PeCDD
3	1,2,3,4,7,8-Hexachlorodibenzo-p-dioxin	HxCDD
4	1,2,3,6,7,8-Hexachlorodibenzo-p-dioxin	HxCDD
5	1,2,3,7,8,9-Hexachlorodibenzo-p-dioxin	HxCDD
6	1,2,3,4,6,7,8-Heptachlorodibenzo-p-dioxin	HpCDD
7	1,2,3,4,5,6,7,8-Octachlorodibenzo-p-dioxin	OCDD
8	2,3,7,8-Tetrachlorodibenzofuran	TCDF
9	1,2,3,7,8-Pentachlorodibenzofuran	PeCDF
10	2,3,4,7,8-Pentachlorodibenzofuran	PeCDF
11	1,2,3,4,7,8-Hexachlorodibenzofuran	HxCDF
12	1,2,3,6,7,8-Hexachlorodibenzofuran	HxCDF
13	1,2,3,7,8,9-Hexachlorodibenzofuran	HxCDF
14	2,3,4,6,7,8-Hexachlorodibenzofuran	HxCDF
15	1,2,3,4,6,7,8-Heptachlorodibenzofuran	HpCDF
16	1,2,3,4,7,8,9-Heptachlorodibenzofuran	HpCDF
17	1,2,3,4,5,6,7,8-Octachlorodibenzofuran	OCDF

1
2
3
4
5
6
7
8
9
10

References

US Environmental Protection Agency (2013) Clean Water Act Priority Pollutants
<http://water.epa.gov/scitech/methods/cwa/pollutants.cfm> (accessed November 2013).

Van den Berg, Martin, et al. "The 2005 World Health Organization reevaluation of human and mammalian toxic equivalency factors for dioxins and dioxin-like compounds." *Toxicological sciences* 93.2 (2006): 223-241.

1 **Appendix 3 – Toxicant Assessment and Determination of**
 2 **Thresholds**

3

4 The following table indicates the maximum allowed toxicant thresholds for some jurisdictions,
 5 including the European Union (EU), the United Kingdom (UK), Australia, Canada, and the United
 6 States (US), that were used to help develop reporting levels for the *IBI Biochar Standards*.
 7 These entities were chosen as resources for toxicant standards due to their history of
 8 regulations addressing these toxicants in soils and other substrates, and their development of
 9 similar soil quality standards (e.g. land-application of biosolids, wood ash, and/or compost).
 10 Toxicant ranges for reporting to the IBI are *not* indicated within this appendix, and are instead
 11 indicated within Table 2 as part of Test Category B. Table A3.1 below is intended to provide a
 12 better understanding of how IBI developed the Maximum Allowed Threshold (MAT) ranges
 13 listed in Table 2 through a survey of international regulations.

14 **Table A3.1. International toxicant regulations and thresholds used for determining range of**
 15 **Maximum Allowed Thresholds for biochar materials.**

Toxicant	International Regulatory Maximum Allowed Thresholds (MATs)	
Polycyclic Aromatic Hydrocarbons (PAHs), total (sum of 16 US EPA PAHs ¹³)	6(A), 300(B)	mg/kg (dry wt)
Polycyclic Aromatic Hydrocarbons (PAHs), B(a)P Toxic Equivalency (TEQ) basis ¹⁴	3(B)	mg/kg B(a)P-TEQ (dry wt)
Dioxin/Furan (PCDD/Fs), WHO-Toxic Equivalency (TEQ) basis ¹⁵	17 (F)	ng/kg WHO-TEQ (dry wt)
Polychlorinated Biphenyls (PCBs), total (sum of 7 US EPA PCBs ¹⁶)	0.2(A), 1(B), 0.5(C)	mg/kg (dry wt)
Arsenic	100(B), 41(D), 13(E)	mg/kg (dry wt)

16

¹³ See Appendix 2.

¹⁴ B(a)P Toxic Equivalency (TEQ) is calculated by multiplying the concentration of each carcinogenic PAH by its Toxic Equivalency Factor (TEF) and summing the products. TEFs of the 8 carcinogenic PAHs are derived from the Australia National Environment Protection Measure 1999 (2013) Table 1A(1) *Health investigation levels for soil contaminants* and are listed in Table A3.2 below.

¹⁵ Toxic Equivalency (TEQ) is calculated by multiplying the concentration of each PCDD/F by its World Health Organization (WHO) Toxic Equivalency Factor (TEF) and summing the products. TEFs of PCDD/Fs are derived from Van den Berg, Martin, et al. "The 2005 World Health Organization reevaluation of human and mammalian toxic equivalency factors for dioxins and dioxin-like compounds." *Toxicological sciences* 93.2 (2006): 223-241 and are listed in Table A3.3 below.

¹⁶ See Appendix 2.

Table A3.1 (continued). International toxicant regulations and thresholds used for determining range of Maximum Allowed Thresholds for biochar materials.

Toxicant	International Regulatory Maximum Allowed Thresholds (MATs)	
Cadmium	1.4(A), 20(B), 39(D), 3(E)	mg/kg (dry wt)
Chromium	93(A), 100(B), 1200 (D), 210(E)	mg/kg (dry wt)
Cobalt	100(B), 34(E)	mg/kg (dry wt)
Copper	143(A), 6000(B), 1500(D), 400(E)	mg/kg (dry wt)
Lead	121(A), 300(B), 300(D), 150(E)	mg/kg (dry wt)
Mercury	1(A), Methyl mercury 10(B), Inorganic mercury 40(B), 17(D), 0.8(E)	mg/kg (dry wt)
Molybdenum	75(D) ¹⁷ , 5(E)	mg/kg (dry wt)
Nickel	47(A), 400(B), 420(D), 62(E)	mg/kg (dry wt)
Selenium	200(B), 36(D), 2(E)	mg/kg (dry wt)
Zinc	416(A), 7400 (B), 2800(D), 700(E)	mg/kg (dry wt)

1
2 **Table A3.2. Toxic Equivalency Factors (TEFs) for the 8 carcinogenic PAHs (see Table 1A(1)**
3 **Health investigation levels for soil contaminants in Reference (B)).**

PAH compound	TEF	PAH compound	TEF
benzo[a]anthracene	0.1	benzo[a]pyrene	1
chrysene	0.01	indeno[1,2,3-cd]pyrene	0.1
benzo[b]fluoranthene	0.1	dibenz[a,h]anthracene	1
benzo[k]fluoranthene	0.1	benzo[ghi]perylene	0.01

4
5 **Table A3.3. Toxic Equivalency Factors (TEFs) for PCDD/Fs (see Table 1 Summary of WHO**
6 **1998 and WHO 2005 TEF Values in Reference (G)).**

PCDD compound	TEF	PCDF compound	TEF
2,3,7,8-TCDD	1	2,3,7,8-TCDF	0.1
1,2,3,7,8-PeCDD	1	1,2,3,7,8-PeCDF	0.03
1,2,3,4,7,8-HxCDD	0.1	2,3,4,7,8-PeCDF	0.3
1,2,3,6,7,8-HxCDD	0.1	1,2,3,4,7,8-HxCDF	0.1
1,2,3,7,8,9-HxCDD	0.1	1,2,3,6,7,8-HxCDF	0.1

¹⁷ For molybdenum, EPA only provides a concentration limit for "All Biosolids". All other EPA limits listed in Table A3.1 are derived from "Environmental Quality and Pollutant Concentration Biosolids".

Table A3.3 (continued). Toxic Equivalency Factors (TEFs) for PCDD/Fs (see Table 1 Summary of WHO 1998 and WHO 2005 TEF Values in Reference (G)).

PCDD compound	TEF	PCDF compound	TEF
1,2,3,4,6,7,8-HpCDD	0.01	1,2,3,7,8,9-HxCDF	0.1
OCDD	0.0003	2,3,4,6,7,8-HxCDF	0.1
		1,2,3,4,6,7,8-HpCDF	0.01
		1,2,3,4,7,8,9-HpCDF	0.01
		OCDF	0.0003

References

- (A) Amlinger F., Favoino E. and Pollack M., (2004) Heavy metals and organic compounds from wastes used as organic fertilisers. Final Report July 2004. REF. Nr. TEND/AML/2001/07/20 ENV.A.2./ETU/2001/0024 <http://www.bvsde.paho.org/bvsacd/cd43/used.pdf> See Table S1 *Averaged limit values of EU countries* (Austria, Belgium, Germany, Denmark, Spain, France, Finland, Greece, Italy, Ireland, Luxembourg, Netherlands, Portugal, Sweden, and United Kingdom) for specific toxicant information. *NB:* Individual nations within the EU will have different regulatory expectations than the average values reported herein; appropriate regulatory values should be followed, rather than regional averages. (accessed March 2013)
- (B) Australia National Environment Protection (Assessment of Site Contamination) Measure 1999. (2013) Schedule B(1) Guideline on Investigation Levels for Soil and Groundwater. <http://www.scew.gov.au/nepms/assessment-site-contamination> See Table 1A(1) *Health investigation levels for soil contaminants* for specific toxicant information. (accessed August 2014)
- (C) Canadian Council of Ministers of the Environment (CCME) 2001; 2006 Soil Quality Guidelines for the Protection of Environmental and Human Health (first published 1999, updated 2001, 2002, 2003, 2004, 2005, 2006 & 2007). <http://st-ts.ccme.ca> See *Agricultural concentration limits* for soil PCB limit. (accessed March 2013)
- (D) United States Environmental Protection Agency (US EPA) 1994. A Plain English Guide to the EPA Part 503 Biosolids Rule, Office of Wastewater Management, Washington DC. EPA/832/R-93/003. http://water.epa.gov/scitech/wastetech/biosolids/503pe_index.cfm See Table 2-1 *Pollutant Concentration Limits for EQ and PC Biosolids* for specific toxicant information. (accessed March 2013)
- (E) Bureau de Normalisation du Quebec 2005. National Standard of Canada. Organic Soil Conditioners – Composts http://www-es.criq.qc.ca/pls/owa_es/bnqw_norme.detail_norme?p_lang=en&p_id_norm=8184&p_code_menu=NORME See *Maximum Acceptable Trace Element Content in Compost* for Type AA Compost. (accessed April 2013)
- (F) Ministère du Développement durable, de l'Environnement et des Parcs Quebec 2008. Guidelines for the Beneficial Use of Fertilising Residuals. Reference Criteria and Regulatory Standards. http://www.mddelcc.gouv.qc.ca/matieres/mat_res-en/fertilisantes/critere/guide-mrf.pdf. See Table 8.2 Maximum limits for chemical contaminants (C categories). (accessed October 2014)
- (G) Van den Berg, Martin, et al. "The 2005 World Health Organization reevaluation of human and mammalian toxic equivalency factors for dioxins and dioxin-like compounds." *Toxicological sciences* 93.2 (2006): 223-241.

Appendix 4 – Biochar Sampling Procedures

Equipment required for sampling

Because of contamination risks all equipment should be thoroughly cleaned with metals-free soap and rinsed with de-ionized water prior to sampling.

- Stainless steel trowel or shovel
- Container for mixing: a large stainless steel tray is ideal
- Plastic tarpaulin for mixing (if necessary)
- Permanent marking pen
- Sample submission form (provided by testing laboratory)
- Sample containers (described in detail below)

Sample containers

Gallon- or quart-sized zip-loc plastic bags (or glass jars) are adequate containers for most of the parameters to be tested in the *IBI Biochar Standards*. However, because organic pollutants including PAHs, PCDD/Fs, and PCBs are prone to volatilization and because plastics may absorb or desorb the target organic pollutants, samples to be tested for those compounds and for the germination inhibition assay must be packaged in special glass containers with Teflon lids or exclusively Teflon containers. Manufactures should check with the testing laboratory to confirm sample amounts to be collected as well as container types. In most cases, labs will provide the Teflon containers for the PAHs, PCDD/Fs, and PCBs tests. Table A4.1 below lists the container types allowed as well as the maximum recommended holding time by each testing parameter.

Table A4.1. Sample containers and holding times by test category parameters.

Parameter	Container type ¹			Max holding time ²
	P	G	GwT or T	
Category A - all parameters	x	x		14 days
Category B - germination inhibition assay			x	7 days
Category B - PAHs, PCDD/Fs, and PCBs			x	7 days until extraction
Category B - metals	x	x		28 days
Category C - all parameters	x	x		14 days

P = Plastic; G = Glass; GwT or T = Glass with Teflon lid or exclusively Teflon

² Max holding time = Maximum holding time recommended at lab (Woods End, 2014)

1
2
3
4
5
6
7
8
9
10
11
12
13
14
15
16
17
18
19
20
21
22
23
24
25
26
27
28
29
30
31
32
33
34
35
36
37
38

Composite sampling

Because of spatial variability of biochar stored in a pile, bin or other storage method, it is necessary to take a composite sample consisting of material collected from several locations within the entire biochar material being sampled. A representative biochar sample must be collected through random selection of subsamples throughout the entire material being sampled. The sampling technique will depend on the type of storage of the material and consist of no less than 15 subsamples (USDA and USCC, 2001).

Composite sampling procedure by storage method

Pile or other uncontained storage method:

1. Remove any covers and thoroughly mix the pile, if possible.
2. Proceed to the first randomly selected sampling location and collect approximately 1 pint of material from near the surface, another pint midway through the pile, and another pint near the bottom of the pile. Place the subsamples in the 5-gallon bucket.
3. Repeat this process at least 5 times at random locations in the biochar pile.
4. When all subsamples have been collected, thoroughly mix the material in the bucket being careful to avoid stratification of the biochar based on particle size. If necessary, mixing may be facilitated by dumping the material in the bucket onto a clean plastic tarpaulin, and mixing thoroughly.
5. Collect the composite sample from the mixed material. Fill the material to overflowing in double wrapped zip-loc bags. Clearly mark the bag contents with permanent marker including name of the biochar, and sampling date and time.

Enclosed containers or bagged product:

1. Open the container/bag and thoroughly mix the material inside, if possible.
2. Proceed to the first randomly selected container/bag and take 3 subsamples consisting of approximately 1 pint of material each from several different depths inside the container/bag. Place the subsamples in the 5-gallon bucket.
3. Repeat this process at least 5 times from randomly selected containers/bags.
4. When all subsamples have been collected, thoroughly mix the material in the bucket being careful to avoid stratification of the biochar based on particle size. If necessary, mixing may be facilitated by dumping the material in the bucket onto a clean plastic tarpaulin, and mixing thoroughly.
5. Collect the composite sample from the mixed material. Fill the material to overflowing in double wrapped zip-loc bags. Clearly mark the bag contents with permanent marker including name of the biochar, and sampling date and time.

Number of samples to collect

1 To ensure statistical accuracy of the composite sample it is necessary to adjust the subsample
2 size based on the overall amount of the biochar material being sampled. Biochar manufacturers
3 should adhere to the following subsampling thresholds:

- 4 - For amounts up to 10 metric tons of biochar material the manufacturer shall take a
5 minimum of 15 random subsamples, as outlined above.
- 6 - For each increase in 10 metric tons of biochar material, at least 15 additional
7 subsamples shall be taken. For example, if 60 metric tons of biochar are being sampled
8 for testing, a minimum of 90 random subsamples should be taken throughout the entire
9 biochar material.

10

11 **Sampling from multiple biochar production units**

12 In cases where biochar is produced from multiple production units, biochar manufacturers may
13 sample from only one unit using the protocols described above *provided that there are no*
14 *material differences (i.e., changes) in feedstock and/or thermochemical production parameters*
15 *between the production units as established in these IBI Biochar Standards* (see Section 5.4
16 and Appendix 6). Where feedstock and/or thermochemical production parameters between
17 production units are above the thresholds established in these *IBI Biochar Standards*, the
18 biochar manufacturer must sample and test the biochars separately as distinct biochar
19 materials.

20 **Shipping biochar samples**

21 Once a composite sample has been taken, the sample must be properly packaged for shipping
22 to the testing laboratory. Standard practice involves securely packaging the double-wrapped
23 biochar samples in sturdy boxes or other containers. The biochar should be clearly marked with
24 the name of the sample and the time and date of sampling. *It is the responsibility of the*
25 *biochar manufacturer to confirm any special procedures for packaging and labeling, quantities*
26 *needed, as well as pricing with the laboratory being used to conduct the testing.* In some cases,
27 laboratories may provide proprietary containers for shipping. Furthermore, because of the
28 possibility of volatilization of organic pollutants at ambient temperatures, it is recommended
29 that samples to be tested for PAHs, PCDD/Fs, and PCBs be chilled on dry ice directly after
30 sampling and during shipping (TMECC).

31

32 **References**

33 US Composting Council and US Department of Agriculture (2001) *Test methods for the*
34 *examination of composting and compost.* (TMECC) Thompson W.H. (ed.)
35 <http://compostingcouncil.org/tmecc/>. (Accessed January 2012).

1 Woods End Laboratories, Inc. (2014) *Principles and Practice: Compost Sampling for Lab*
2 *Analysis*. <http://woodsend.org/wp-content/uploads/2011/03/sampli1.pdf> (Accessed
3 August 2014)

4

DRAFT

Appendix 5 – Recommended General Sample Analysis Procedures and Protocols for Specific Tests

Sample handling and processing

Since sample handling and processing is analysis methodology-dependent, appropriate procedures should be selected based upon the chemical tests that will be conducted. Sample processing can vary depending upon the physicochemical analyses to be conducted; sample preparation methods followed should be specifically intended for the selected physicochemical tests to be conducted. For example, sample preparation methods can include grinding and sieving or oven-drying for analysis, to provide the dry weight measure indicated in Table 3 of the biochar test categories. General sample preparation procedures can be found in TMECC Section 02.02 Laboratory Sample Preparation (TMECC, 2001). Caution should be exercised, however, since the methodologies recommended therein are designed for compost, and not for biochar. Comments within the TMECC document indicate that sample heating can occur while grinding, which can result in a change in sample qualities and characteristics. To avoid this, it is recommended that samples be ground in a mortar and pestle and sieved to a smaller size range (e.g. 2mm) , to reduce the risk of heating, sparking, or ignition (following sample grinding methods for pH and EC assessment noted in Rajkovich et al, 2011).

Combined approach to analyzing pH and EC

Generic pH and EC analysis procedures have been drawn from the TMECC methodologies (US Composting Council and US Department of Agriculture (2001)). These procedures for the use of control and reference pH samples and electrode probes have been adapted for use with biochar, as follows: where the TMECC methodology recommends a 1:5 (v:v or w:w)¹⁸ solution of compost:deionized water, a 1:20 (w:v)¹⁹ solution of biochar:deionized water should be used for biochar pH and EC analysis, following Rajkovich et al (2011). Similarly, additional time should be allotted for solution equilibration after the combination of deionized water and biochar. Following Rajkovich et al (2011), 1.5 hours should be provided for the shaking and equilibration of biochar-deionized-water solutions prior to pH and EC analysis. Upon completion of the shaking and equilibration phase, pH and EC analysis may be conducted on the same

¹⁸ v:v – volume:volume denotes a ratio based on equivalent units of volume measurement in a dilution or blend (e.g. a 1:5 v:v biochar:water blend indicates the need to blend 1 ml of biochar with 5 ml of water)
w:w – weight:weight denotes a ratio based on equivalent units of weight measurement in a dilution or blend (e.g. a 1:5 w:w biochar:soil blend indicates the need to blend 1 g of biochar with 5 g of soil)

¹⁹ w:v – weight:volume denotes a blend or dilution ratio expressed as grams of solid per milliliter of liquid. (e.g. a 1:20 w:v biochar:water blend indicates the need to blend 1 mg of biochar with 20 ml of water)

1 samples, rather than making separate replicates for pH and EC. To complete the pH and EC
2 analysis follow methodologies 04.10 and 04.11 of the TMECC methodology (US Composting
3 Council and US Department of Agriculture (2001)).
4

5 **Germination Inhibition Assay**

6 The purpose of the analysis is to determine whether adding biochar to soil has an effect on
7 seed germination. It is assumed that a negative effect indicates the presence of undesirable
8 compounds in the biochar material. The Germination Inhibition Assay analysis follows
9 procedures outlined by Van Zwieten et al (2010). The recommended approach for biochar
10 analysis is to follow Van Zwieten et al's method, as it is drawn from the initial 1984 OECD
11 methodology, and to report seedling germination as it relates to the potential failure to
12 germinate in biochar-soil. Lettuce (*Lactuca sativa L.*) is the most widely recommended species
13 to use in germination assessments, due to its sensitivity. Other species that can be used are
14 found within the OECD (1984) methodology. Results should be reported as a "fail" to reflect a
15 failure of seedling germination and growth in biochar-blended soils, thus rejecting the null-
16 hypothesis that there is no difference between biochar-soil blends and unamended soils within
17 the test. Results can be reported as a "pass" where there is no difference of germination and
18 seedling growth success between biochar-soil blends and (control or unamended) soil, or where
19 biochar-soil blends are preferred; both conditions are considered to pass these tests.
20

21 **Analysis of Surface Area**

22 The analysis of surface area will follow the methodologies presented in ASTM D6556-10
23 Standard Test Method for Carbon Black – Total and External Surface Area by Nitrogen
24 Adsorption. Although carbon blacks can be made at much higher temperatures than biochar,
25 the following Brunauer, Emmett, and Teller (BET) procedure will be effective for analyzing
26 biochar surface area, with the following additional steps:

- 27 1. The relevant measure is the B.E.T. nitrogen surface area ("BET NSA").
- 28 2. The Vacuum Degassing method should be used (section 8.5) in preference to the Flow
29 Degassing (8.4).
- 30 3. Section 8.5.3 Degassing temperature should not exceed 250°C to avoid further
31 thermochemical alteration of the sample, as some biochars are made at temperatures as
32 low as 300°C. The times necessary to degas may greatly exceed the ½ hour mentioned
33 in this section of the analysis; up to 48 hours can be used to conduct the analysis,
34 however this time must be reported along with the results. The actual time needed will
35 depend on the instrument tolerance level, which is dictated by the manufacturer.
- 36 4. As indicated in section 9.6, a minimum of five evenly-spaced data points can be
37 presented between 0.05 and 0.5 p/p0. Two additional data points, at 0.05 and 0.075
38 p/p0 should also be presented in the results.
- 39 5. The mass of sample on which the measurement is based should be determined after the
40 surface area measurement has been completed.

1 6. The instrument should be calibrated periodically with a reference standard supplied by
2 the manufacturer to make sure it is in good working order according the manufacturer's
3 specifications.

4 Final units for surface area analysis should be reported in square meters per gram (m²/g).

5

6 **References**

7 ASTM International (2009) *ASTM D6556-10 Standard Test Method for Carbon Black—Total and*
8 *External Surface Area by Nitrogen Adsorption*
9 <http://www.astm.org/Standards/D6556.htm> (accessed January 2012).

10 OECD Organisation for Economic Co-operation and Development (1984) Terrestrial Plants,
11 Growth Test no. 208. In *Guideline for Testing of Chemicals*.
12 <http://www.oecd.org/dataoecd/18/0/1948285.pdf>. (Accessed January 2012).

13 Rajkovich, S., Enders, A., Hanley, K., Hyland, C., Zimmerman, A.R., and Lehmann, J. (2011)
14 Corn growth and nitrogen nutrition after additions of biochars with varying properties to
15 a temperate soil. *Biology and Fertility of Soils* 48(3):271-284.

16 US Composting Council and US Department of Agriculture (2001) *Test methods for the*
17 *examination of composting and compost. (TMECC)* Thompson W.H. (ed.)
18 <http://compostingcouncil.org/tmecc/>. (Accessed January 2012).

19 Van Zwieten, L., Kimber, S., Morris, S., Chan, K.Y., Downie, A., Rust, J., Joseph, S., and Cowie,
20 A. (2010) Effects of biochar from slow pyrolysis of papermill waste on agronomic
21 performance and soil fertility. *Plant Soil* 327:235-246. DOI 10.1007/s11104-009-0050-x.

22

23

1 **Appendix 6 – Determining a “Material Change” in Feedstock**

2

3 This appendix addresses the process for determining a “material change” in feedstock
4 composition. It is necessary to monitor material changes in feedstock in order to meet the
5 requirement that biochar physicochemical properties are tested and reported after every
6 material change in feedstock as stated in Section 5.3.

7 **Classification of Unprocessed and Processed Feedstocks**

8 Feedstocks are classified by type in order to determine material changes in feedstock
9 composition. Table A6.1 is a list of unprocessed²⁰ feedstock types based on biomass
10 composition. Unprocessed feedstocks not listed in this table may be used to make biochar if
11 they meet 1) the definition of unprocessed feedstock in the glossary and 2) the other feedstock
12 requirements outlined in Section 3.1.

13 **Table A6.1. Unprocessed feedstock types for determining a material change in feedstock**
14 **composition.**

Unprocessed Feedstock Types
Rice hulls & straw
Maize cobs & stover
Non-maize cereal straws
Sugar cane bagasse & trash
Switch grass, Miscanthus & bamboo
Oil crop residues e.g., sugar beet, rapeseed
Leguminous crop residues e.g., soy, clover
Hemp residues
Softwoods (coniferous)
Hardwoods (broadleaf)

15

16 Table A6.2 is a list of processed feedstock types based on biomass composition. Processed
17 feedstocks not listed in this table may be used to make biochar if they meet 1) the definition of
18 processed feedstock in the glossary and 2) the other feedstock requirements outlined in Section
19 3.1.

²⁰ See Appendix 9 – Glossary for definitions of processed and unprocessed feedstocks.

1 **Table A6.2. Processed feedstock types for determining a material change in feedstock**
2 **composition.**

Processed Feedstock Types
Cattle manure
Pig manure
Poultry litter
Sheep manure
Horse manure
Paper mill sludge
Sewage sludge
Distillers grain
Anaerobic digester sludge
Biomass fraction of MSW – woody material
Biomass fraction of MSW – yard trimmings
Biomass fraction of MSW – food waste
Food industry waste

3

4 **Determining a Material Change in Feedstock**

5 As described in Section 5.3, a change of 10% or greater between any feedstock type listed in
6 Tables A6.1 or A6.2 will constitute a material change in feedstock and require a new round of
7 testing. If an unprocessed feedstock is not listed in Table A6.1, then a material change in
8 feedstock shall be based on the species of plant material used for the feedstock, so that a
9 change of 10% or greater in species composition constitutes a material change in feedstock.

10 For processed feedstocks, any significant change in processing parameters (e.g., a change in
11 process chemistry for paper sludge, or a change from dairy cow manure to dairy cow manure
12 digestate from an anaerobic digester), or processing facility (e.g., a change from paper mill
13 sludge provided by Facility A to that provided by Facility B) shall result in the processed
14 feedstock being classified as a new type.

15 The following are illustrative examples for determining material changes in unprocessed and
16 processed feedstocks:

- 17 1. a change from 100% softwoods to 100% hardwoods;
- 18 2. a change from 100% cow manure to 100% pig manure;
- 19 3. a change from 100% maize stover to 100% poultry litter;
- 20 4. a change from 100% sewage sludge from Facility A to 100% sewage sludge from
21 Facility B; or

1 5. a change from 100% Switch grass to 90% Switch grass plus 10% sugar cane bagasse.

2

3 **Mixed Feedstocks**

4 When a mix of feedstocks is used—whether unprocessed, processed or a combination—a
5 change of 10% or more in the total feedstock composition shall constitute a material change in
6 feedstock. The magnitude of the change in the feedstock shall be calculated by adding up the
7 decreases in percentages for each individual feedstock type composing the mixed feedstock.
8 The following is an illustrative example:

9 Rosie's biochar is originally made of the following mix of unprocessed and processed feedstock
10 types:

- 11 • 35% spruce wood chips,
- 12 • 25% poultry litter,
- 13 • 15% wheat straw,
- 14 • 15% assorted leaves, and
- 15 • 10% corn stover.

16 This past year, due to a change in spruce availability, her feedstocks changed to:

- 17 • 25% spruce wood chips,
- 18 • 35% poultry litter,
- 19 • 15% wheat straw,
- 20 • 15% assorted leaves, and
- 21 • 10% corn stover.

22 Because a 10% total change in feedstock has occurred, Rosie must re-test her biochar.

23 If Rosie's biochar had instead changed from her original blend in the following way, she would
24 still need to re-test her biochar because there has been greater than 10% change in
25 feedstocks:

- 26 • 38% spruce wood chips,
- 27 • 20% poultry litter,
- 28 • 20% wheat straw,
- 29 • 17% assorted leaves, and
- 30 • 5% corn stover.

31

32

33

1 **Appendix 7 – The Use of H:C_{org} to Indicate C Stability**

2

3 The molar H:C_{org} ratio is recommended to distinguish biochar from other thermochemically
4 altered organic matter for several reasons:

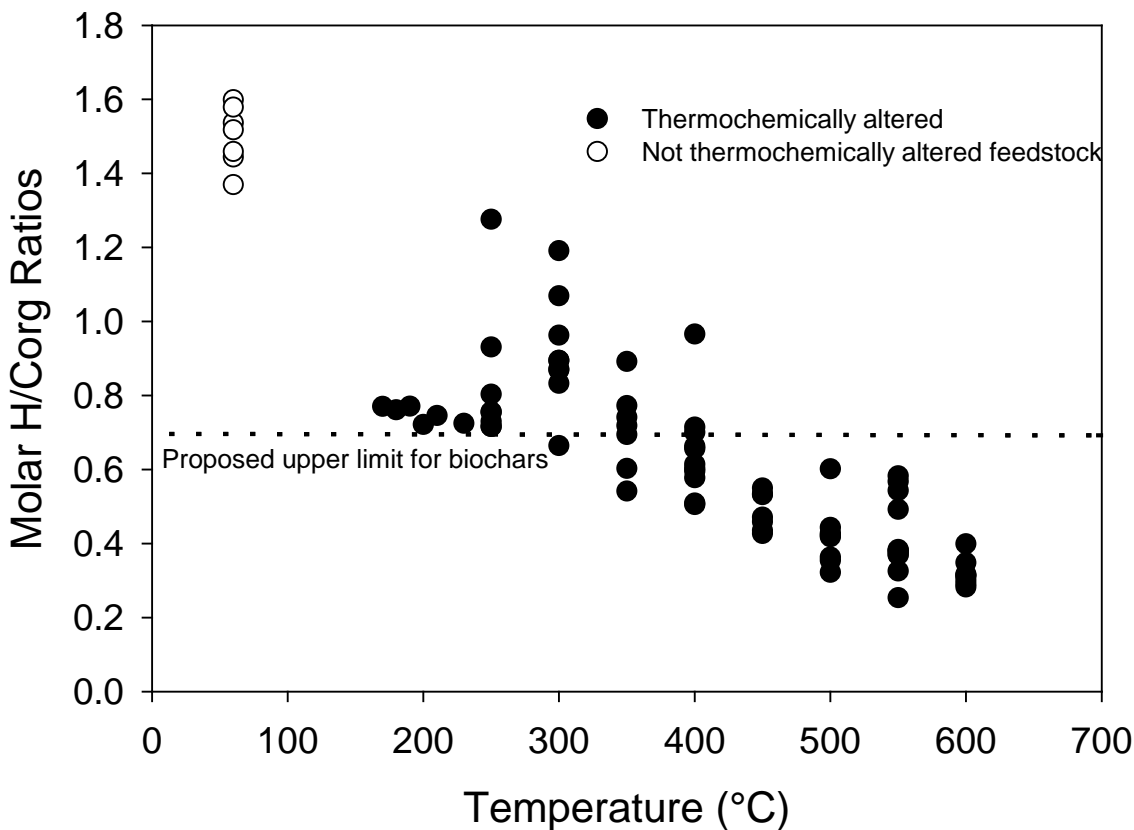
- 5 1. H:C ratios change substantially with thermochemical treatment (Keiluweit et al., 2010);
- 6 2. O:C ratios have been shown to correlate well with stability of biochars (Spokas, 2010);
- 7 3. H:C and O:C ratios are closely related (for low-ash biochars <50% ash and <80%
8 volatiles (ash-free basis));
- 9 4. H is determined directly in most laboratories, whereas O is calculated by subtraction.

10 The modification of using the organic C values rather than total C for this ratio is motivated by
11 the presence of inorganic carbonates in some high-ash biochars. These inorganic carbonates do
12 not form aromatic groups distinctive of biochar materials.

13 The molar H:C_{org} ratio is a material property that is correlated with the degree of
14 thermochemical alteration that produces fused aromatic ring structures in the material. The
15 presence of these structures is an intrinsic measure of the stability of the material.

16 The upper H:C_{org} limit of 0.7 is used to distinguish biochar from biomass that has not been
17 thermochemically altered and from other materials that have been only partially
18 thermochemically altered. We use the term “thermochemically converted” to refer to
19 thermochemically altered materials that have an H:C_{org} below 0.7. These materials have a
20 greater proportion of fused aromatic ring structures. Other thermochemically processed
21 materials that have an H:C_{org} value greater than 0.7 may be thermochemically “altered” but
22 they are not considered to be thermochemically “converted”.

23 Figure A7.1 below shows relationships between processing temperature and H:C_{org} molar ratio
24 for a number of thermochemically altered materials, as compared to unprocessed biomass.



1
 2 **Figure A7.1. Relationship between molar H:C_{org} ratios and temperature of thermochemically**
 3 **altered organic matter in comparison to untreated biomass. The dashed line is the upper**
 4 **limit of 0.7. Data points below the 0.7 line are thermochemically altered materials that are**
 5 **considered to be thermochemically “converted” (data from Sevilla and Fuertes, 2009ab;**
 6 **Calvelo Pereira et al, 2011; Enders et al., 2012).**

7
 8 **References**

9 Enders A., Hanley K., Whitman T., Joseph S. and Lehmann J. Characterization of biochars to
 10 evaluate recalcitrance and agronomic performance. *Bioresource Technology* 114, 644-
 11 653.

12 Keiluweit M., Nico P.S., Johnson M.G. and Kleber M. (2010) Dynamic molecular structure of
 13 plant-derived black carbon (biochar). *Environmental Science and Technology* 44:1247-
 14 1253.

15 Sevilla M. and Fuertes A.B. (2009a) Chemical and structural properties of carbonaceous
 16 products obtained by hydrothermal carbonization of saccharides. *Chemistry - A*
 17 *European Journal* 15:4195-4203.

- 1 Sevilla M. and Fuertes A.B. (2009b) The production of carbon materials by hydrothermal
2 carbonization of cellulose. *Carbon* 47:2281–2289.
- 3 Spokas K.A. (2010) Review of the stability of biochar in soils: predictability of O:C molar ratios.
4 *Carbon Management* 1:289-303.
- 5 Calvelo Pereira, R., Kaal, J., Camps Arbestain, M., Pardo Lorenzo, R., Aitkenhead, W., Hedley,
6 M., Macías, F., Hindmarsh, J., Maciá-Agulló, J.A. (2011) Contribution to characterisation
7 of biochar to estimate the labile fraction of carbon. *Organic Geochemistry* 42:1331–
8 1342.
- 9

DRAFT

1 **Appendix 8 – Glossary**

2

3 **List of Acronyms and Abbreviations**

4 AOAC – Association of Analytical Communities

5 ASTM – ASTM International (formerly known as the American Society for Testing and Materials)

6 BNQ – Bureau de Normalisation du Quebec (a member of the National Standards System of
7 Canada involved in developing product and process standards for Canadians)

8 C – Carbon

9 CaCO₃ – Calcium Carbonate

10 C_{org} – Organic Carbon

11 CCME – Canadian Council of Ministers of the Environment

12 CSIRO – Commonwealth Scientific and Industrial Research Organisation, Australia

13 dS – decisiemens

14 dS/m – decisiemens per meter

15 dry wt – dry weight

16 EC – Electrical Conductivity

17 EPA – Environmental Protection Agency, United States

18 EU – European Union

19 F – Polychlorinated Dibenzofuran (Furan)

20 g – gram

21 GHG – greenhouse gas

22 H – Hydrogen

23 HCl – hydrochloric acid

24 HMIS – Hazardous Materials Identification System

25 IBI – International Biochar Initiative

26 ICP – Inductively Coupled Plasma

- 1 IEEE – Institute of Electrical and Electronics Engineers
- 2 ISO – International Organization for Standardization
- 3 I-TEQ – International Toxicity Equivalent
- 4 K – Potassium
- 5 KCl – potassium chloride
- 6 kg – kilogram
- 7 m – meter
- 8 mg – milligram
- 9 M – molar
- 10 MAT – Maximum Allowed Threshold
- 11 MSDS – Material Safety Data Sheet
- 12 MSW – Municipal Solid Waste
- 13 N – Nitrogen
- 14 NEPC – National Environment Protection Council, Australia
- 15 ng – nanogram
- 16 OECD – Organisation for Economic Co-operation and Development
- 17 OMS – Office of Mobile Sources, division of US EPA
- 18 P – Phosphorus
- 19 PAH – Polycyclic Aromatic Hydrocarbon
- 20 PCB – Polychlorinated Biphenyl
- 21 PCDD – Polychlorinated Dibenzodioxin (Dioxin)
- 22 PCDD/F – Dioxins/Furans
- 23 POPs – Persistent Organic Pollutants
- 24 S – Siemens
- 25 S/m – Siemens per meter
- 26 SA – Surface Area

1 TMECC – Test Methods for the Examining of Composting and Compost (from US Composting
2 Council and USDA)

3 USDA – United States Department of Agriculture

4 USGS – United States Geological Service

5 µg – microgram

6

7 **Definition of Terms**

8 *Note: Terms and definitions have been adapted from the references given. Terms and*
9 *definitions created specifically for this document are referenced as “IBI”.*

10 Ash: The inorganic matter, or mineral residue of total solids, that remains when a sample is
11 combusted in the presence of excess air. (Adapted from US Composting Council and US
12 Department of Agriculture, 2001)

13 Batch: 75 m³ or 20 metric tonnes of biomass ash i.e., the quantity of biomass ash
14 approximately equivalent to a tractor trailer load of material. (IBI, 2014)

15 Biochar: A solid material obtained from thermochemical conversion of biomass in an oxygen-
16 limited environment. (IBI, 2012)

17 Biochar Characteristics: For the purposes of these standards, biochar characteristics are those
18 physical or chemical properties of biochar that affect the following uses for biochar: 1) biochar
19 that is added to soils with the intention to improve soil functions; and 2) biochar that is
20 produced in order to reduce emissions from biomass that would otherwise naturally degrade to
21 GHG, by converting a portion of that biomass into a stable carbon fraction that has carbon
22 sequestration value. (IBI, 2012)

23 Biological Material: Material derived from, or produced by, living or recently living organisms.
24 This material can be “unprocessed” or “processed”. Unprocessed biological material is living
25 material, or recently living material from the plant kingdom (or other non-animal taxa such as
26 fungi) that may have been mechanically resized (such as wood chips), but has not been
27 processed in an animal’s body or gone through an anthropogenic chemical modification.
28 Processed biological material is recently living material that has been chemically modified by
29 anthropogenic or biological processes (e.g., paper sludge, manure). All animal products,
30 including bones, offal, food-waste containing animal products, and animal manures are
31 considered to be processed biological material. (IBI, 2012)

32 Biomass: The biodegradable fraction of products, waste and residues of biological origin from
33 agriculture (including vegetal and animal substances), forestry, and related industries including
34 fisheries and aquaculture, as well as the biodegradable fraction of industrial and municipal

1 waste (including municipal solid waste). (Adapted from European Commission Agriculture and
2 Rural Development, 2010)

3 Biomass Ash: Ash generated as a byproduct of energy generation in biomass-fueled furnaces or
4 boilers. Biomass ash is subdivided into bottom ash and flyash. (IBI, 2014)

5 Bottom Ash: The component of biomass ash that falls to the bottom of the burner unit of a
6 biomass-fueled furnace or boiler and that has a consistency of ash or a semi-solid slag material.
7 (Oregon DEQ, 2011)

8 Clean Cellulosic Biomass: Those residuals that are akin to traditional cellulosic biomass such as
9 forest-derived biomass (e.g., green wood, forest thinnings, clean and unadulterated bark,
10 sawdust, trim, and tree harvesting residuals from logging and sawmill materials), corn stover
11 and other biomass crops used specifically for energy production (e.g., energy cane, other fast
12 growing grasses), bagasse and other crop residues (e.g., nut shells), wood collected from forest
13 fire clearance activities, trees and clean wood found in disaster debris, clean biomass from land
14 clearing operations, and clean construction and demolition wood. These fuels are not secondary
15 materials or solid wastes unless discarded. Clean biomass is biomass that does not contain
16 contaminants at concentrations not normally associated with virgin biomass materials. (US CFR,
17 2014)

18 Composite Sample: Grab samples from one source of biomass ash that are thoroughly mixed to
19 produce a consistent sample. (IBI, 2014)

20 Contaminant: An undesirable material in a biochar material or biochar feedstock that
21 compromises the quality or usefulness of the biochar or through its presence or concentration
22 causes an adverse effect on the natural environment or impairs human use of the environment
23 (adapted from Canadian Council of Ministers of the Environment, 2005). Contaminants include
24 fossil fuels and fossil fuel-derived chemical compounds, glass, and metal objects. (IBI, 2012)

25 Diluent/Dilutant: Inorganic material that is deliberately mixed or inadvertently comingled with
26 biomass feedstock prior to processing. These materials will not carbonize in an equivalent
27 fashion to the biomass. These materials include soils and common constituents of natural soils,
28 such as clays and gravel that may be gathered with biomass or intermixed through prior use of
29 the feedstock biomass. Diluents/dilutants may be found in a diverse range of feedstocks, such
30 as agricultural residues, manures, and municipal solid wastes. (IBI, 2012)

31 Dioxin: The term “dioxin” is commonly used to refer to a family of chemicals that share
32 chemical structures and characteristics. These compounds include polychlorinated dibenzo
33 dioxins (PCDDs) and polychlorinated dibenzo furans (PCDFs), which are unwanted by-products
34 of industrial and natural processes, usually involving combustion. Dioxins are listed as Persistent
35 Organic Pollutants by the Stockholm Convention. (IBI, 2012)

36 Feedstock: The material undergoing the thermochemical process to create biochar. Feedstock
37 material for biochar consists of biological material, but may also contain diluents. (IBI, 2012)

- 1 Flyash: The lightest-weight component of biomass ash in a biomass-fueled furnace or boiler
2 that rises with the flue gases and is captured by a boiler or incinerator's air contaminant control
3 equipment. (Oregon DEQ, 2011)
- 4 Fossil Fuel-Derived Chemical Compounds: This category of contaminant includes any compound
5 of a synthetic nature, created from hydrocarbons, including, but not limited to plastics, solvents,
6 paints, resins, and tars. Because of the blending of wastes and use of synthetic materials to
7 bind and label other materials (e.g. plastic flagging tape in forestry residues), fossil fuel-derived
8 chemical compounds have become commonplace in multiple waste streams, and are often
9 difficult to separate from feedstocks prior to processing. These contaminants can contain highly
10 toxic chemicals like polychlorinated biphenyls (PCBs) that may act as bioaccumulators and affect
11 the resulting quality of biochar. (IBI, 2012)
- 12 Grab Sample: An individual sample collected at a selected time. (IBI, 2014)
- 13 Hazardous Materials or Wastes: Potential environmental pollutants that, when concentrated,
14 can be a source of regulatory concern for any use or application that may influence human or
15 environmental health and wellbeing. (Adapted from US Composting Council and US Department
16 of Agriculture, 2001)
- 17 IBI Biochar Certification Program: A voluntary, self-certifying, biochar certification program
18 administered by the International Biochar Initiative that offers biochar manufacturers the
19 opportunity to certify their biochar(s) as having met the minimum criteria established in the *IBI*
20 *Biochar Standards*. For further information please visit [http://www.biochar-](http://www.biochar-international.org/certification)
21 [international.org/certification](http://www.biochar-international.org/certification). (IBI, 2013)
- 22 Heat Treatment Temperature: The temperature at which a feedstock material is processed
23 during thermochemical conversion in a given thermochemical process. (IBI, 2013)
- 24 Manufacturer: The party or parties who process(es) feedstock materials into biochar, and
25 submit(s) the biochar for testing according to these *IBI Biochar Standards*. (IBI, 2012)
- 26 Material Change: Changes in feedstock type (listed in Tables A6.1 and A6.2) or residence time
27 of greater than 10%, or changes in heat treatment temperature of +/- 50°C. (IBI, 2013)
- 28 Municipal Waste/Municipal Solid Waste (MSW): solid non-hazardous refuse that originates from
29 residential, industrial, commercial, institutional, demolition, land clearing, or construction
30 sources (adapted from Canadian Council of Ministers of the Environment 2005). Municipal solid
31 waste includes durable goods, non-durable goods, containers and packaging, food wastes and
32 yard trimmings, and miscellaneous inorganic wastes. (Adapted from US Environmental
33 Protection Agency, 1995)
- 34 Organic Carbon: Biologically degradable carbon-containing compounds found in the organic
35 fraction of biochar feedstocks. Biochar feedstocks can contain such compounds as sugars,
36 starches, proteins, fats, cellulose, and lignocellulose, which are thermochemically degradable.

1 Other organic carbon forms can include petroleum and petroleum by-products such as plastics
2 and contaminated oils, which are, for the purposes of these standards, included within the
3 definition of contaminants, but may also be thermochemically degraded. The organic carbon
4 fraction does not include inorganic carbonate concretions such as calcium and magnesium
5 carbonates. (Adapted from US Composting Council and US Department of Agriculture, 2001)

6 Persistent Organic Pollutants (POPs): POPs are organic chemical substances, that is, they are
7 carbon-based. They possess a particular combination of physical and chemical properties such
8 that, once released into the environment, remain intact for exceptionally long periods of time
9 (many years); become widely distributed throughout the environment as a result of natural
10 processes involving soil, water and, most notably, air; accumulate in the fatty tissue of living
11 organisms including humans, and are found at higher concentrations at higher levels in the food
12 chain; and are toxic to both humans and wildlife. (Adapted from Stockholm Convention, 2012)

13 Policy revision: A revision to the *IBI Biochar Standards* that occurs when there is a substantive
14 change to the policies, rules, and/or scope of that may change the eligibility or acceptability of a
15 biochar material, and that results in the publication of a new version of the *IBI Biochar*
16 *Standards*.

17 Polychlorinated biphenyls (PCBs): PCBs are a group of organic compounds used in the
18 manufacture of plastics, as lubricants, and dielectric fluids in transformers, in protective coating
19 for wood, metal and concrete, and in adhesives and wire coating. PCBs have been banned in
20 most countries and are no longer manufactured, but sources remain in the environment in the
21 form of products and waste. The Stockholm Convention lists PCBs as POPs. (IBI, 2012)

22 Polycyclic aromatic hydrocarbons (PAHs): PAHs refer to a family of compounds built from two or
23 more benzene rings. Sources of PAHs include fossil fuels and incomplete combustion of organic
24 matter, in auto engines, incinerators, forest fires, charcoal grilling, or other biomass burning.
25 PAHs are usually found as a mixture containing two or more of these compounds, such as soot.
26 Out of hundreds of different PAH compounds, only a few are considered to be highly toxic and
27 of regulatory concern. (Adapted from USGS, 2012)

28 Post-processing: Any action undertaken by the biochar manufacturer to enhance, transform or
29 otherwise alter the physicochemical properties of the biochar material after completion of the
30 thermochemical conversion process. (IBI, 2014)

31 Processed Feedstock: Biomass that has gone through chemical processing (for example, paper
32 pulp sludge) or biological processing (for example, digestion, such as manures and sludge from
33 waste effluent treatment) beyond simple mechanical processing to modify physical properties.
34 Because animals may bioaccumulate toxicants in their tissues, all animal parts and products are
35 considered to be processed feedstocks for purposes of these guidelines. Any biomass material
36 that may have been grown on soils contaminated with heavy metals or other toxicants will also
37 be considered a processed feedstock for purposes of these guidelines. (IBI, 2012)

1 Residence Time: The time a feedstock is held within a consistent temperature range in a given
2 thermochemical process. (IBI, 2012)

3 Residues: Secondary products derived from agricultural, forestry, food or industrial production
4 and processing chains. (RSB, 2013)

5 Soil Functions: Soil functions include: “(i) biomass production, including in agriculture and
6 forestry; (ii) storing, filtering and transforming nutrients, substances and water; (iii) hosting the
7 biodiversity pool, such as habitats, species and genes; (iv) acting as a platform for human
8 activities; (v) source of raw materials; (vi) acting as carbon pool; and (vii) storing geological
9 and archeological heritage.” (Adapted from European Commission COM, 2006)

10 Technical Note: A note issued by IBI to describe a time-sensitive technical program revision
11 prior to the publication of a new sub-version of the *IBI Biochar Standards*.

12 Technical Program Revision: A revision to the *IBI Biochar Standards* that occurs when technical
13 or editorial changes are deemed necessary, and resulting in the publication of a new sub-
14 version of the *IBI Biochar Standards*.

15 Toxicants: Chemical or physical agents that, depending on dose, can produce adverse effects in
16 biological organisms (adapted from Trush 2008). These chemicals may be essential for some
17 plants and animals at low levels, or in a specific oxidation state, but can be toxic at higher
18 concentrations or in a different oxidation state. Toxicants may be naturally present in soils or
19 artificially produced by human activity. (Adapted from US EPA, 1999)

20 Unprocessed Feedstock: Biomass from the plant kingdom (or other non-animal taxa such as
21 fungi), grown in a clean, uncontaminated environment, that may have gone through mechanical
22 processing to change its physical properties (e.g., particle size), but has not gone through
23 chemical processing or treatment, or biological processing (e.g., digestion). (IBI, 2012)

24 Volatile Matter: Those products, exclusive of moisture, given off by a material as a gas or vapor,
25 determined by definite prescribed methods that may vary according to the nature of the
26 material. (Adapted from Milne et al, 1990)

27 Weathering: Changes in biochar physicochemical properties due to precipitation, freeze-thaw
28 cycles, fluctuations in temperature, deposition of atmospheric chemicals, and/or exposure to
29 ambient air. (IBI, 2014)

30

31 **References**

32 Canadian Council of Ministers for the Environment (CCME) (2005) *Guidelines for Compost*
33 *Quality*. PN 1340 Winnipeg Manitoba, Canada. ISBN 1-896997-60-0.

34 European Commission Agriculture and Rural Development (2010) *Biomass Potential*
35 http://ec.europa.eu/agriculture/bioenergy/potential/index_en.htm (accessed September
36 2011).

- 1 European Commission COM (2006) *Establishing a Framework for the Protection of Soil and*
2 *Amending Directive 2004/35/EC.* [http://eur-](http://eur-lex.europa.eu/LexUriServ/LexUriServ.do?uri=CELEX:52006PC0232:en:NOT)
3 [lex.europa.eu/LexUriServ/LexUriServ.do?uri=CELEX:52006PC0232:en:NOT](http://eur-lex.europa.eu/LexUriServ/LexUriServ.do?uri=CELEX:52006PC0232:en:NOT) (accessed
4 April 2013).
- 5 Milne, T.A.; Brennan, A.H.; Glenn, B.H. Sourcebook of Methods of Analysis for Biomass
6 Conversion and Biomass Conversion Processes. SERI/SP-220-3548. Golden, CO: Solar
7 Energy Research Institute, February 1990. Oregon Department of Environmental Quality.
8 *Fact Sheet: Management of Wood Ash Generated from Biomass Combustion Facilities.*
9 Updated 5/5/2011.
10 <http://www.deq.state.or.us/lq/pubs/factsheets/sw/ManagementWoodAshGenBiomassCo>
11 [mbustionFac.pdf](http://www.deq.state.or.us/lq/pubs/factsheets/sw/ManagementWoodAshGenBiomassCo) (Accessed November 2013).
- 12 Oregon Department of Environmental Quality. *Fact Sheet: Management of Wood Ash Generated*
13 *from Biomass Combustion Facilities.* Updated 5/5/2011.
14 <http://www.deq.state.or.us/lq/pubs/factsheets/sw/ManagementWoodAshGenBiomassCo>
15 [mbustionFac.pdf](http://www.deq.state.or.us/lq/pubs/factsheets/sw/ManagementWoodAshGenBiomassCo) (Accessed November 2013)
- 16 RSB - Roundtable on Sustainable Biomaterials. (2013) *RSB-STD-01-010-ver. 1.6-RSB Standard*
17 *for end-of-life products, by-products and residues.* [http://rsb.org/pdfs/standards/RSB-](http://rsb.org/pdfs/standards/RSB-STD-01-010%20-%20ver%201.6%20RSB%20Standard%20on%20end-of-life-products,%20residues%20and%20by-products.pdf)
18 [STD-01-010%20-%20ver%201.6%20RSB%20Standard%20on%20end-of-life-](http://rsb.org/pdfs/standards/RSB-STD-01-010%20-%20ver%201.6%20RSB%20Standard%20on%20end-of-life-products,%20residues%20and%20by-products.pdf)
19 [products,%20residues%20and%20by-products.pdf](http://rsb.org/pdfs/standards/RSB-STD-01-010%20-%20ver%201.6%20RSB%20Standard%20on%20end-of-life-products,%20residues%20and%20by-products.pdf) (Accessed April 2014).
- 20 Stockholm Convention. *What are POPs?*
21 <http://chm.pops.int/Convention/ThePOPs/tabid/673/Default.aspx> (Accessed March 2012).
- 22 Trush, Michael A. *Adsorption, Distribution, and Excretion.* (2008) The Johns Hopkins University
23 Johns Hopkins Bloomberg School of Public Health.
24 http://ocw.jhsph.edu/courses/publichealthtoxicology/PDFs/Lecture1_Trush.pdf
- 25 US Code of Federal Regulations, 40 CFR § 241.2
- 26 US Composting Council and US Department of Agriculture (2001) *Test methods for the*
27 *examination of composting and compost. (TMECC)* Thompson W.H. (ed.)
28 <http://compostingcouncil.org/tmecc/> (Accessed January 2012).
- 29 US Environmental Protection Agency (1999) *Background report on fertilizer use, contaminants*
30 *and regulations.* Prepared by BATELLE, Columbus OH. National Program Chemicals
31 Division; Office of Pollution Prevention and Toxics, Washington D.C.
32 <http://www.epa.gov/oppt/pubs/fertilizer.pdf>, via
33 <http://www.epa.gov/agriculture/tfer.html>. (Accessed February 2012).
- 34 US Environmental Protection Agency (1995) *Characterization of Municipal Solid Waste in the*
35 *United States: 1995 Update.*
36 <http://www.epa.gov/osw/nonhaz/municipal/pubs/msw95.pdf> (Accessed April 2013).

1 US Geological Service. *Polynuclear Aromatic Hydrocarbons (PAHs)/Polycyclic Aromatic*
2 *Hydrocarbons (PAHs)* <http://toxics.usgs.gov/definitions/pah.html> (Accessed March
3 2012).

4
5

DRAFT

1 **Appendix 9 – Creative Commons License**



2
3 **Creative Commons Legal Code**

4 **Attribution-NonCommercial-NoDerivs 3.0 Unported**

5 CREATIVE COMMONS CORPORATION IS NOT A LAW FIRM AND DOES NOT PROVIDE LEGAL
6 SERVICES. DISTRIBUTION OF THIS LICENSE DOES NOT CREATE AN ATTORNEY-CLIENT
7 RELATIONSHIP. CREATIVE COMMONS PROVIDES THIS INFORMATION ON AN "AS-IS" BASIS.
8 CREATIVE COMMONS MAKES NO WARRANTIES REGARDING THE INFORMATION PROVIDED,
9 AND DISCLAIMS LIABILITY FOR DAMAGES RESULTING FROM ITS USE.

10 **License**

11 THE WORK (AS DEFINED BELOW) IS PROVIDED UNDER THE TERMS OF THIS CREATIVE
12 COMMONS PUBLIC LICENSE ("CCPL" OR "LICENSE"). THE WORK IS PROTECTED BY
13 COPYRIGHT AND/OR OTHER APPLICABLE LAW. ANY USE OF THE WORK OTHER THAN AS
14 AUTHORIZED UNDER THIS LICENSE OR COPYRIGHT LAW IS PROHIBITED.

15 BY EXERCISING ANY RIGHTS TO THE WORK PROVIDED HERE, YOU ACCEPT AND AGREE TO
16 BE BOUND BY THE TERMS OF THIS LICENSE. TO THE EXTENT THIS LICENSE MAY BE
17 CONSIDERED TO BE A CONTRACT, THE LICENSOR GRANTS YOU THE RIGHTS CONTAINED
18 HERE IN CONSIDERATION OF YOUR ACCEPTANCE OF SUCH TERMS AND CONDITIONS.

19 **1. Definitions**

20 a. "Adaptation" means a work based upon the Work, or upon the Work and other pre-existing
21 works, such as a translation, adaptation, derivative work, arrangement of music or other
22 alterations of a literary or artistic work, or phonogram or performance and includes
23 cinematographic adaptations or any other form in which the Work may be recast,
24 transformed, or adapted including in any form recognizably derived from the original,
25 except that a work that constitutes a Collection will not be considered an Adaptation for
26 the purpose of this License. For the avoidance of doubt, where the Work is a musical
27 work, performance or phonogram, the synchronization of the Work in timed- relation
28 with a moving image ("synching") will be considered an Adaptation for the purpose of
29 this License.

30 b. "Collection" means a collection of literary or artistic works, such as encyclopedias and
31 anthologies, or performances, phonograms or broadcasts, or other works or subject
32 matter other than works listed in Section 1(f) below, which, by reason of the selection
33 and arrangement of their contents, constitute intellectual creations, in which the Work is
34 included in its entirety in unmodified form along with one or more other contributions,
35 each constituting separate and independent works in themselves, which together are
36 assembled into a collective whole. A work that constitutes a Collection will not be
37 considered an Adaptation (as defined above) for the purposes of this License.

- 1 c. "Distribute" means to make available to the public the original and copies of the Work
2 through sale or other transfer of ownership.
- 3 d. "Licensor" means the individual, individuals, entity or entities that offer(s) the Work under the
4 terms of this License.
- 5 e. "Original Author" means, in the case of a literary or artistic work, the individual, individuals,
6 entity or entities who created the Work or if no individual or entity can be identified, the
7 publisher; and in addition (i) in the case of a performance the actors, singers, musicians,
8 dancers, and other persons who act, sing, deliver, declaim, play in, interpret or
9 otherwise perform literary or artistic works or expressions of folklore; (ii) in the case of a
10 phonogram the producer being the person or legal entity who first fixes the sounds of a
11 performance or other sounds; and, (iii) in the case of broadcasts, the organization that
12 transmits the broadcast.
- 13 f. "Work" means the literary and/or artistic work offered under the terms of this License
14 including without limitation any production in the literary, scientific and artistic domain,
15 whatever may be the mode or form of its expression including digital form, such as a
16 book, pamphlet and other writing; a lecture, address, sermon or other work of the same
17 nature; a dramatic or dramatico-musical work; a choreographic work or entertainment in
18 dumb show; a musical composition with or without words; a cinematographic work to
19 which are assimilated works expressed by a process analogous to cinematography; a
20 work of drawing, painting, architecture, sculpture, engraving or lithography; a
21 photographic work to which are assimilated works expressed by a process analogous to
22 photography; a work of applied art; an illustration, map, plan, sketch or three-
23 dimensional work relative to geography, topography, architecture or science; a
24 performance; a broadcast; a phonogram; a compilation of data to the extent it is
25 protected as a copyrightable work; or a work performed by a variety or circus performer
26 to the extent it is not otherwise considered a literary or artistic work.
- 27 g. "You" means an individual or entity exercising rights under this License who has not
28 previously violated the terms of this License with respect to the Work, or who has
29 received express permission from the Licensor to exercise rights under this License
30 despite a previous violation.
- 31 h. "Publicly Perform" means to perform public recitations of the Work and to communicate to
32 the public those public recitations, by any means or process, including by wire or
33 wireless means or public digital performances; to make available to the public Works in
34 such a way that members of the public may access these Works from a place and at a
35 place individually chosen by them; to perform the Work to the public by any means or
36 process and the communication to the public of the performances of the Work, including
37 by public digital performance; to broadcast and rebroadcast the Work by any means
38 including signs, sounds or images.
- 39 i. "Reproduce" means to make copies of the Work by any means including without limitation by
40 sound or visual recordings and the right of fixation and reproducing fixations of the
41 Work, including storage of a protected performance or phonogram in digital form or
42 other electronic medium.

1 2. Fair Dealing Rights. Nothing in this License is intended to reduce, limit, or restrict any uses
2 free from copyright or rights arising from limitations or exceptions that are provided for in
3 connection with the copyright protection under copyright law or other applicable laws.

4 3. License Grant. Subject to the terms and conditions of this License, Licensor hereby grants
5 You a worldwide, royalty-free, non-exclusive, perpetual (for the duration of the applicable
6 copyright) license to exercise the rights in the Work as stated below:

7 a. to Reproduce the Work, to incorporate the Work into one or more Collections, and to
8 Reproduce the Work as incorporated in the Collections; and,

9 b. to Distribute and Publicly Perform the Work including as incorporated in Collections.

10 The above rights may be exercised in all media and formats whether now known or hereafter
11 devised. The above rights include the right to make such modifications as are technically
12 necessary to exercise the rights in other media and formats, but otherwise you have no rights
13 to make Adaptations. Subject to 8(f), all rights not expressly granted by Licensor are hereby
14 reserved, including but not limited to the rights set forth in Section 4(d).

15 4. Restrictions. The license granted in Section 3 above is expressly made subject to and limited
16 by the following restrictions:

17 b. You may Distribute or Publicly Perform the Work only under the terms of this License. You
18 must include a copy of, or the Uniform Resource Identifier (URI) for, this License with
19 every copy of the Work You Distribute or Publicly Perform. You may not offer or impose
20 any terms on the Work that restrict the terms of this License or the ability of the
21 recipient of the Work to exercise the rights granted to that recipient under the terms of
22 the License. You may not sublicense the Work. You must keep intact all notices that
23 refer to this License and to the disclaimer of warranties with every copy of the Work You
24 Distribute or Publicly Perform. When You Distribute or Publicly Perform the Work, You
25 may not impose any effective technological measures on the Work that restrict the
26 ability of a recipient of the Work from You to exercise the rights granted to that recipient
27 under the terms of the License. This Section 4(a) applies to the Work as incorporated in
28 a Collection, but this does not require the Collection apart from the Work itself to be
29 made subject to the terms of this License. If You create a Collection, upon notice from
30 any Licensor You must, to the extent practicable, remove from the Collection any credit
31 as required by Section 4(c), as requested.

32 c. You may not exercise any of the rights granted to You in Section 3 above in any manner that
33 is primarily intended for or directed toward commercial advantage or private monetary
34 compensation. The exchange of the Work for other copyrighted works by means of
35 digital file-sharing or otherwise shall not be considered to be intended for or directed
36 toward commercial advantage or private monetary compensation, provided there is no
37 payment of any monetary compensation in connection with the exchange of copyrighted
38 works.

39 d. If You Distribute, or Publicly Perform the Work or Collections, You must, unless a request has
40 been made pursuant to Section 4(a), keep intact all copyright notices for the Work and
41 provide, reasonable to the medium or means You are utilizing: (i) the name of the

1 Original Author (or pseudonym, if applicable) if supplied, and/or if the Original Author
2 and/or Licensor designate another party or parties (e.g., a sponsor institute, publishing
3 entity, journal) for attribution ("Attribution Parties") in Licensor's copyright notice, terms
4 of service or by other reasonable means, the name of such party or parties; (ii) the title
5 of the Work if supplied; (iii) to the extent reasonably practicable, the URI, if any, that
6 Licensor specifies to be associated with the Work, unless such URI does not refer to the
7 copyright notice or licensing information for the Work. The credit required by this
8 Section 4(c) may be implemented in any reasonable manner; provided, however, that in
9 the case of a Collection, at a minimum such credit will appear, if a credit for all
10 contributing authors of Collection appears, then as part of these credits and in a manner
11 at least as prominent as the credits for the other contributing authors. For the avoidance
12 of doubt, You may only use the credit required by this Section for the purpose of
13 attribution in the manner set out above and, by exercising Your rights under this
14 License, You may not implicitly or explicitly assert or imply any connection with,
15 sponsorship or endorsement by the Original Author, Licensor and/or Attribution Parties,
16 as appropriate, of You or Your use of the Work, without the separate, express prior
17 written permission of the Original Author, Licensor and/or Attribution Parties.

18 a. For the avoidance of doubt:

19 i. Non-waivable Compulsory License Schemes. In those jurisdictions in which the right to
20 collect royalties through any statutory or compulsory licensing scheme cannot be
21 waived, the Licensor reserves the exclusive right to collect such royalties for any
22 exercise by You of the rights granted under this License;

23 ii. Waivable Compulsory License Schemes. In those jurisdictions in which the right to
24 collect royalties through any statutory or compulsory licensing scheme can be waived,
25 the Licensor reserves the exclusive right to collect such royalties for any exercise by You
26 of the rights granted under this License if Your exercise of such rights is for a purpose or
27 use which is otherwise than noncommercial as permitted under Section 4(b) and
28 otherwise waives the right to collect royalties through any statutory or compulsory
29 licensing scheme; and,

30 iii. Voluntary License Schemes. The Licensor reserves the right to collect royalties,
31 whether individually or, in the event that the Licensor is a member of a collecting society
32 that administers voluntary licensing schemes, via that society, from any exercise by You
33 of the rights granted under this License that is for a purpose or use which is otherwise
34 than noncommercial as permitted under Section 4(b).

35 b. Except as otherwise agreed in writing by the Licensor or as may be otherwise permitted by
36 applicable law, if You Reproduce, Distribute or Publicly Perform the Work either by itself
37 or as part of any Collections, You must not distort, mutilate, modify or take other
38 derogatory action in relation to the Work which would be prejudicial to the Original
39 Author's honor or reputation.

40 5. Representations, Warranties and Disclaimer

41 UNLESS OTHERWISE MUTUALLY AGREED BY THE PARTIES IN WRITING, LICENSOR OFFERS
42 THE WORK AS-IS AND MAKES NO REPRESENTATIONS OR WARRANTIES OF ANY KIND

1 CONCERNING THE WORK, EXPRESS, IMPLIED, STATUTORY OR OTHERWISE, INCLUDING,
2 WITHOUT LIMITATION, WARRANTIES OF TITLE, MERCHANTABILITY, FITNESS FOR A
3 PARTICULAR PURPOSE, NONINFRINGEMENT, OR THE ABSENCE OF LATENT OR OTHER
4 DEFECTS, ACCURACY, OR THE PRESENCE OF ABSENCE OF ERRORS, WHETHER OR NOT
5 DISCOVERABLE. SOME JURISDICTIONS DO NOT ALLOW THE EXCLUSION OF IMPLIED
6 WARRANTIES, SO SUCH EXCLUSION MAY NOT APPLY TO YOU.

7 6. Limitation on Liability. EXCEPT TO THE EXTENT REQUIRED BY APPLICABLE LAW, IN NO
8 EVENT WILL LICENSOR BE LIABLE TO YOU ON ANY LEGAL THEORY FOR ANY SPECIAL,
9 INCIDENTAL, CONSEQUENTIAL, PUNITIVE OR EXEMPLARY DAMAGES ARISING OUT OF THIS
10 LICENSE OR THE USE OF THE WORK, EVEN IF LICENSOR HAS BEEN ADVISED OF THE
11 POSSIBILITY OF SUCH DAMAGES.

12 7. Termination

13 a. This License and the rights granted hereunder will terminate automatically upon any breach
14 by You of the terms of this License. Individuals or entities who have received Collections
15 from You under this License, however, will not have their licenses terminated provided
16 such individuals or entities remain in full compliance with those licenses. Sections 1, 2,
17 5, 6, 7, and 8 will survive any termination of this License.

18 b. Subject to the above terms and conditions, the license granted here is perpetual (for the
19 duration of the applicable copyright in the Work). Notwithstanding the above, Licensor
20 reserves the right to release the Work under different license terms or to stop
21 distributing the Work at any time; provided, however that any such election will not
22 serve to withdraw this License (or any other license that has been, or is required to be,
23 granted under the terms of this License), and this License will continue in full force and
24 effect unless terminated as stated above.

25 8. Miscellaneous

26 a. Each time You Distribute or Publicly Perform the Work or a Collection, the Licensor offers to
27 the recipient a license to the Work on the same terms and conditions as the license granted
28 to You under this License.

29 b. If any provision of this License is invalid or unenforceable under applicable law, it shall not
30 affect the validity or enforceability of the remainder of the terms of this License, and
31 without further action by the parties to this agreement, such provision shall be reformed to
32 the minimum extent necessary to make such provision valid and enforceable.

33 c. No term or provision of this License shall be deemed waived and no breach consented to
34 unless such waiver or consent shall be in writing and signed by the party to be charged with
35 such waiver or consent.

36 d. This License constitutes the entire agreement between the parties with respect to the Work
37 licensed here. There are no understandings, agreements or representations with respect to
38 the Work not specified here. Licensor shall not be bound by any additional provisions that
39 may appear in any communication from You. This License may not be modified without the
40 mutual written agreement of the Licensor and You.

1 e. The rights granted under, and the subject matter referenced, in this License were drafted
2 utilizing the terminology of the Berne Convention for the Protection of Literary and Artistic
3 Works (as amended on September 28, 1979), the Rome Convention of 1961, the WIPO
4 Copyright Treaty of 1996, the WIPO Performances and Phonograms Treaty of 1996 and the
5 Universal Copyright Convention (as revised on July 24, 1971). These rights and subject
6 matter take effect in the relevant jurisdiction in which the License terms are sought to be
7 enforced according to the corresponding provisions of the implementation of those treaty
8 provisions in the applicable national law. If the standard suite of rights granted under
9 applicable copyright law includes additional rights not granted under this License, such
10 additional rights are deemed to be included in the License; this License is not intended to
11 restrict the license of any rights under applicable law.

12 **Creative Commons Notice**

13 Creative Commons is not a party to this License, and makes no warranty whatsoever in
14 connection with the Work. Creative Commons will not be liable to You or any party on any legal
15 theory for any damages whatsoever, including without limitation any general, special, incidental
16 or consequential damages arising in connection to this license. Notwithstanding the foregoing
17 two (2) sentences, if Creative Commons has expressly identified itself as the Licensor
18 hereunder, it shall have all rights and obligations of Licensor.

19 Except for the limited purpose of indicating to the public that the Work is licensed under the
20 CCPL, Creative Commons does not authorize the use by either party of the trademark "Creative
21 Commons" or any related trademark or logo of Creative Commons without the prior written
22 consent of Creative Commons. Any permitted use will be in compliance with Creative Commons'
23 then-current trademark usage guidelines, as may be published on its website or otherwise
24 made available upon request from time to time. For the avoidance of doubt, this trademark
25 restriction does not form part of this License.

26 Creative Commons may be contacted at <http://creativecommons.org>.